

TM 11-7025-217-30P

TECHNICAL MANUAL

**DIRECT SUPPORT MAINTENANCE
REPAIR PARTS AND SPECIAL TOOLS LIST
FOR
TELEPRINTER ELECTROGRAPHIC TT-772(P)/G
(NSN 5815-01-127-5868)**

HEADQUARTERS, DEPARTMENT OF THE ARMY

15 MAY 1987

TECHNICAL MANUAL

No. 11-7025-217-30P

HEADQUARTERS
DEPARTMENT OF THE ARMY
WASHINGTON, DC, 15 May 1987

**DIRECT SUPPORT MAINTENANCE
REPAIR PARTS AND SPECIAL TOOLS LIST
FOR
TELEPRINTER ELECTROGRAPHIC TT-772(P)/G
(NSN 581 S-01-127-5868)**

Current as of 15 February 1987

REPORTING ERRORS AND RECOMMENDING IMPROVEMENTS

You can help improve this manual. If you find any mistakes or if you know of a way to improve the procedures, please let us know. Mail your letter, DA Form 2028 (Recommended Changes to Publications and Blank Forms), or DA Form 2028-2 located in back of this manual direct to: Commander, US Army Communications-Electronics Command and Fort Monmouth, ATTN: AMSEL-ME-MP, Fort Monmouth, NJ 07702-5000. In either case, a reply will be furnished direct to you.

Table of Contents

SECTION		Page	Illus Figure
	I. Introduction	1	
	II. Repair Parts List.	1-1	
GROUP	00 Teleprinter Electrographic TT-772(P)/G	1-1	1
	01 Logic Board Assembly (Not applicable)		
	02 Printer Mechanics Sub-Assembly	2-1	2
	0201 Print System Assembly(Notapplicable)		
	0202 Stepper Motor and Door Harness Assembly	3-1	3
	0203 Motor Harness Assembly.	4-1	4
	0204 circuit Board Illumination Assembly (Not applicable)		
	03 DC Power Supply	5-1	5
	0301 Power Supply Interconnect Cable Assembly	6-1	6
	0302 Converter Assembly(Notapplicable)		
	0303 Power Control Assembly(Not applicable)		
	0304 Input Power Filter Assembly.	7-1	7
	0305 Input Data Cable Assembly	8-1	8
	04 Main Interconnection Cable Assembly (Not applicable)		
	05 Control Panel Assembly	9-1	9
	06 Power Cable	10-1	10
	07 Motor/Take-up Cable.	11-1	11
	08 Finger DriverCircuit Card Assembly(Not applicable)		
	09 Condole Machining	12-1	12
	10 Printer Jeep Mounting Kit (Accessory).	13-1	13
SECTION	III. Special Tools List (Not applicable)		
	Iv. National Stock Number and Part Number Index	1-1	

SECTION I

INTRODUCTION

1. Scope

This manual lists and authorizes spares and repair parts; special tools; special test, measurement, and diagnostic equipment (TMDE); and other special support equipment required for performance of direct support maintenance of the TT-772(P)/G. It authorizes the requisitioning, issue, and disposition of spares, repair parts and special tools as indicated by the source, maintenance and recoverability (SMR) codes.

2. General

This Repair Parts and Special Tools List is divided into the following sections:

a. Section II. Repair Parts List. A list of spares and repair parts authorized by this RPSTL for use in the performance of maintenance. The list also includes parts which must be removed for replacement of the authorized parts. Parts lists are composed of functional groups in ascending numeric sequence, with the parts in each group listed in ascending item number sequence. Figure numbers are listed directly beneath the group header.

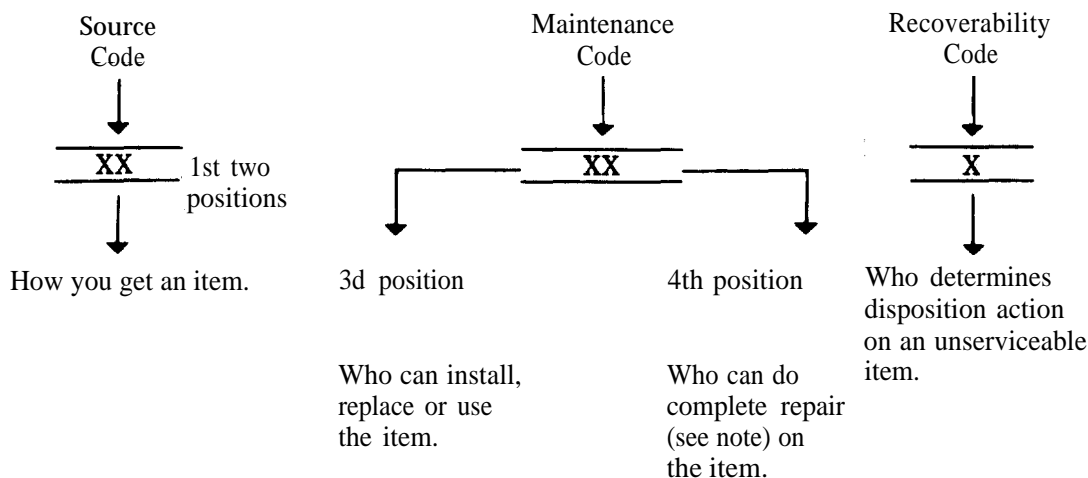
b. Section III. Special Tools List. Nonapplicable.

c. Section IV. National Stock Number and Part Number Index. A list, in National item identification number (NIIN) sequence, of all National stock numbered items appearing in the listing, followed by a list in alphanumeric sequence of all part numbers appearing in the listings. National stock numbers and part numbers are cross-referenced to each illustration figure and item number appearance.

3. Explanation of Columns (Section II and III)

a. Item No. (Column (1)). Indicates the number used to identify items called out in the illustration.

b. SMR Code (Column (2)). The source, maintenance, and recoverability (SMR) code is a five-position code containing supply/requisitioning information, maintenance category authorization criteria, and disposition instruction, as shown in the following breakout:



NOTE

Complete repair: Maintenance capacity, capability, and authority to perform all corrective maintenance tasks of the "Repair" function in a use/user environment in order to restore serviceability to a failed item.

(1) Source code. The source code tells you how to get an item needed for maintenance, repair, or overhaul of an end item/equipment. Explanations of source codes follows:

Code

Explanation

PA
PB
PC
PD
PE
PF
PG

Stocked items; use the applicable NSN to request/requisition items with these source codes. They are authorized to the category indicated by the code entered in the third position of the SMR code.

NOTE

Items coded PC are subject to deterioration.

KD
KF
KB

Items with these codes are not to be requested/requisitioned individually. They are part of a kit which is authorized to the maintenance category indicated in the third position of the SMR code. The complete kit must be requisitioned and applied.

MO—Made at org/AVUM category
MF—Made at DS/AVUM category
MH—Made at GS category
ML—Made at Specialized Repair Activity (SRA)
MD—Made at Depot

Items with these codes are not to be request/requisitioned individually. They must be made from bulk material which is identified by the part number in the description and usable on code (UOC) column and listed in the Bulk Material group of the repair parts list. If the item is authorized to you by the third position code of the SMR code, but the source code indicates it is made at a higher category, order the item from the higher category of maintenance.

AO—Assembled by org/AVUM category
AF—Assembled by DS/AVIM category
AH—Assembled by GS category
AL—Assembled by SRA
AD—Assembled by Depot

Items with these codes are not to be requested/requisitioned individually. The parts that make up the assembled item must be requisitioned or fabricated and assembled at the category of maintenance indicated by the source code. If the third position code of the SMR code authorizes you to replace the item, but the source code indicates the item is assembled at a higher category, order the item from the higher category of maintenance.

Code

Explanation

XA—Do not requisition an “XA” coded item. Order its next higher assembly.

XB—If an “XB” item is not available from salvage, order it using the FSCM and part number given.

XC—Installation drawing, diagram, instruction sheet, field service drawing, that is identified by manufacturers part number.

XD—Item is not stocked. Order an “XD” coded item through normal supply channels using the FSCM and part number given, if no NSN is available.

NOTE

Cannibalization or controlled exchange, when authorized, may be used as a source of supply for items with the above source codes, except for those source coded “XA” or those aircraft support items restricted by requirements of AR 750-1.

(2) Maintenance code. Maintenance codes tell you the category of maintenance authorized to USE and REPAIR support items. The maintenance codes are entered in the third and fourth positions of the SMR code as follows:

(a) The maintenance code entered in the third position tells you the lowest maintenance category authorized

to remove, replace, and use an item. The maintenance code entered in the third position will indicate authorization to one of the following categories of maintenance.

- | code | <i>Application/Explanation</i> |
|------|---|
| C- | Crew or operator maintenance done within organizational or aviation maintenance. |
| O- | Organizational or aviation unit category can remove, replace, and use the item. |
| F- | Direct support or aviation intermediate category can remove, replace, and use the item. |
| H- | General support category can remove, replace, and use the item. |
| L- | Specialized repair activity can remove, replace, and use the item. |
| D- | Depot category can remove, replace, and use the item, |

(b) The maintenance code entered in the fourth position tells whether or not the item is to be repaired and identifies the lowest maintenance category with the capability to do complete repair (i.e., perform all authorized repair functions). This position will contain one of the following maintenance codes.

NOTE

Some limited repair may be done on the item at a lower category of maintenance, if authorized by the Maintenance Allocation Chart (MAC) and SMR codes.

- | Code | <i>Application/Explanation</i> |
|------|--|
| O- | Organizational or aviation unit is the lowest category that can do complete repair of the item. |
| F- | Direct support or aviation intermediate is the lowest category that can do complete repair of the item. |
| H- | General support is the lowest category that can do complete repair of the item. |
| L- | Specialized repair activity (designate the specialized repair activity) is the lowest category that can do complete repair of the item. |
| D- | Depot is the lowest category that can do complete repair of the item. |
| Z- | Nonreparable. No repair is authorized. |
| B- | No repair is authorized. (No parts or special tools are authorized for the maintenance of a "B" coded item). However, the item may be reconditioned by adjusting, lubricating, etc., at the user category. |

(3) **Recoverability code.** Recoverability codes are assigned to items to indicate the disposition action on unserviceable items. The recoverability code is entered in the fifth position of the SMR Code as follows:

- | <i>Recoverability codes</i> | <i>Application/Explanation</i> |
|-----------------------------|---|
| Z- | Nonreparable Item. When unserviceable, condemn and dispose of the item at the category of maintenance shown in the third position of SMR Code. |
| O- | Reparable item. When uneconomically repairable, condemn and dispose of the item at organizational or aviation unit category. |
| F- | Reparable item. When uneconomically repairable, condemn and dispose of the item at direct support or aviation intermediate category. |
| H- | Reparable item. When uneconomically repairable, condemn and dispose of the item at general support category. |
| D- | Reparable item. When beyond lower category repair capability, return to depot. Condemnation and disposal of item not authorized below depot category. |
| L- | Reparable item. Condemnation and disposal not authorized below specialized repair activity (SRA). |
| A- | Item requires special handling or condemnation procedures because of specific reasons (e.g., precious metal content, high dollar value, critical material, or hazardous material). Refer to appropriate manuals/directives for specific instructions. |

c. *FSCM (Column (3)).* The Federal Supply Code for Manufacturer (FSCM) is a 5digit numeric code which is used to identify the manufacturer, distributor, or Government agency, etc., that supplies the item.

d. *Port Number (Column (4)).* Indicates the primary number used by the manufacturer (individual, company, firm, corporation, or Government activity), which controls the design and characteristics of the item by means of its engineering drawings, specifications, standards, and inspection requirements to identify an item or range of items.

NOTE

When you use a NSN to requisition an item, the item you receive may have a different part number from the part ordered.

- e. *Description and Usable on Code (UOC)(Column (5)).* This Column includes the following information.
- (1) The Federal item name and, when required, a minimum description to identify the item.
 - (2) The statement "END OF FIGURE" appears just below the last item description in Column (5) for a given figure in both section II and section III.
- f. *Qty (Column (6)).* Indicates the quantity of the item used in the breakout shown on the illustration figure,

which is prepared for a functional group, subfunctional group, or an assembly. A "V" appearing in this column in lieu of a quantity indicates that the quantity is variable and the quantity may vary from application to application.

4. Explanation of Columns (Section IV)

a. National Stock Number (NSN) Index.

(1) **Stock number column.** This column lists the NSN by National item identification number (NIIN) sequence. The NIIN consists of the last nine digits of the NSN. When using this column to locate an item, ignore the first four digits of the NSN. When requisitioning items use the complete NSN (13 digits).

(2) **Fig. column.** This column lists the number of the figure where the item is identified/located. The illustrations are in numerical sequence in sections II and III.

(3) **Item column.** The item number identifies the item associated with the figure listed in the adjacent Fig. column. This item is also identified by the NSN listed on the same line.

b. Part Number Index. Part numbers in this index are listed by part number in ascending alphanumeric sequence.

(1) **FSCM column.** This column lists the Federal supply code for manufacturer (FSCM).

(2) **Part number column.** This column indicates the part number assigned to the item.

(3) **Stock number column.** This column lists the National stock number for the associated part number and manufacturer identified in the part number and FSCM columns to the left.

(4) **Fig. column.** This column lists the number of the figure where the item is identified/located in sections II and III.

(5) **Item column.** The item number is that number assigned to the item as it appears in the figure referenced in the adjacent figure number column.

5. Special Information

a. Associated Publications. The publications listed below pertain to the TT-772(IVG and its components):

TM 11-7021-201-12, processor AN/UYK-19A and 19AX

TM 11-7025-217-20P, Teleprinter, Electrographic TT-772(P)/G

TM 11-7025-217-30, Teleprinter, Electrographic TT-772(P)/G

b. National Stock Numbers. National stock numbers (NSN's) that are missing from P source coded items have been applied for and will be added to this TM by future change/revision when they are entered in the Army Master Data File (AMDF). Until the NSN's are established and published, submit exception requisitions to: Commander, US Army Communications-Electronics Command and Fort Monmouth, ATTN: AMSEL-MM, Fort Monmouth, NJ 07703-5000 for the part required to support your equipment.

6. How to Locate Repair Parts

a. When National stock number or part number is not known.

(1) **First.** Using the table of contents, determine the assembly group or subassembly group to which the item belongs. This is necessary since figures are prepared for assembly groups and subassembly groups, and listings are divided into the same groups.

(2) **Second.** Find the figure covering the assembly group or subassembly group to which the item belongs.

(3) **Third.** Identify the item on the figure and note the item number.

(4) **Fourth.** Refer to the Repair Parts List for the figure to find the part number for the item number noted on the figure.

(5) **Fifth.** Refer to the Part Number Index to find the NSN, if assigned.

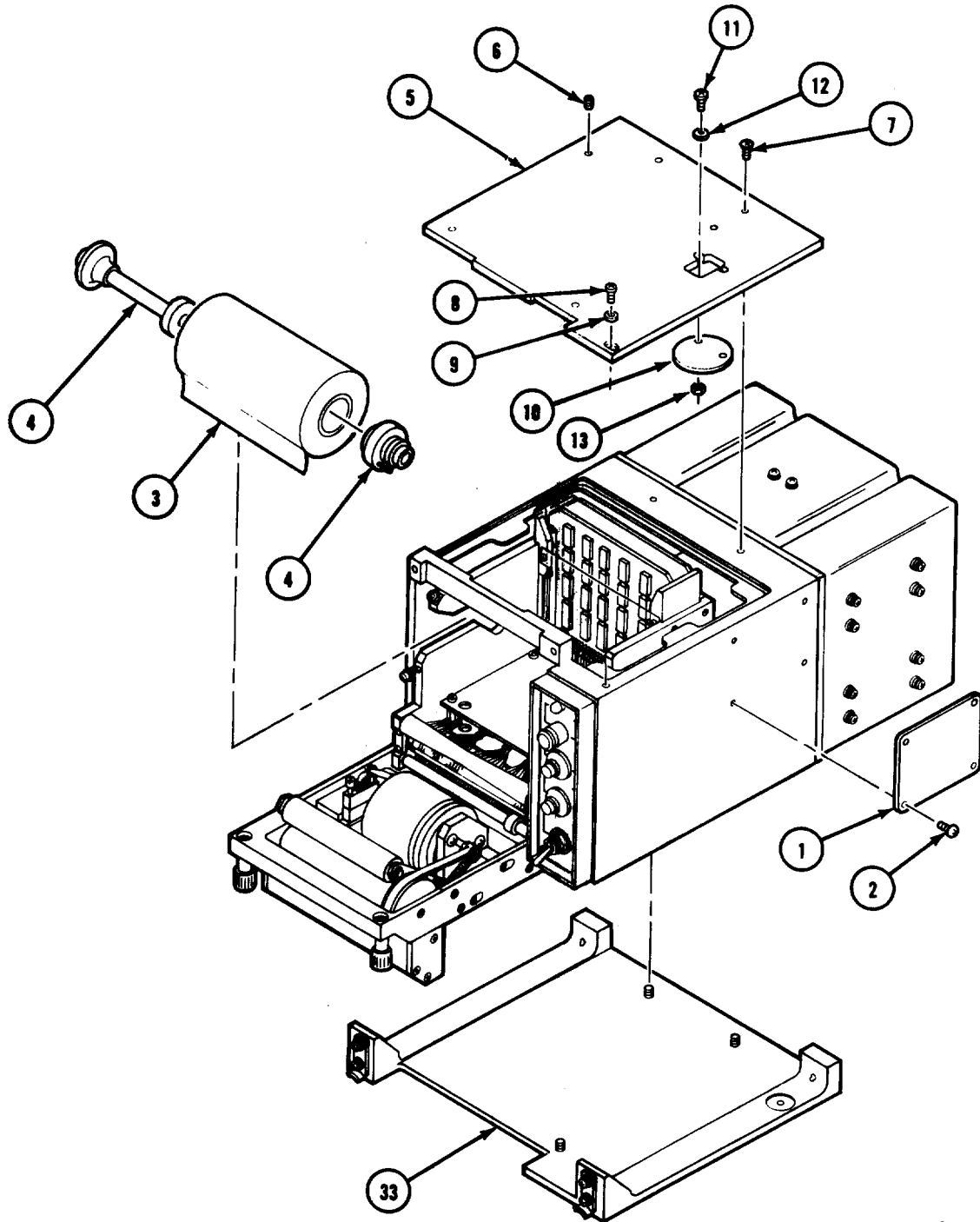
b. When National stock number or part number is known.

(1) **First.** Using the index of National stock numbers and part numbers, find the pertinent National stock number or part number. The NSN index is in National item identification number (NIIN) sequence (para 4a(1)). The part numbers in the part number index are listed in ascending alphanumeric sequence (para 4b). Both indexes cross-reference you to the illustration figure and item number of the item you are looking for.

(2) **Second.** After finding the figure and item number, verify that the item is the one you're looking for, then locate the item number in the repair parts list for the figure.

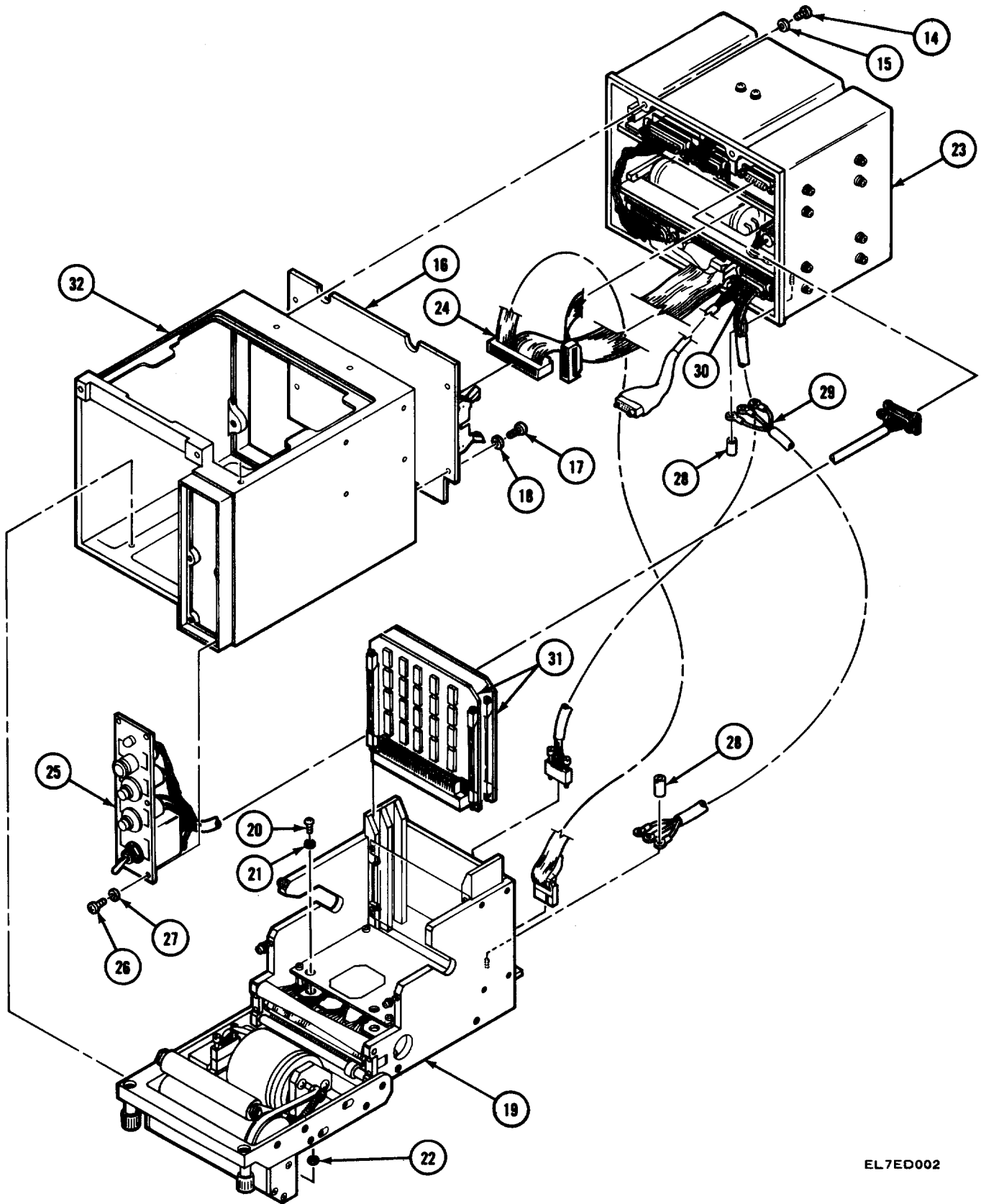
7. Abbreviations

Not applicable.



EL7ED00:

Figure 1. Teleprinter Electrographic TT-772(P)/G (Sheet 1 of 2)



EL7ED002

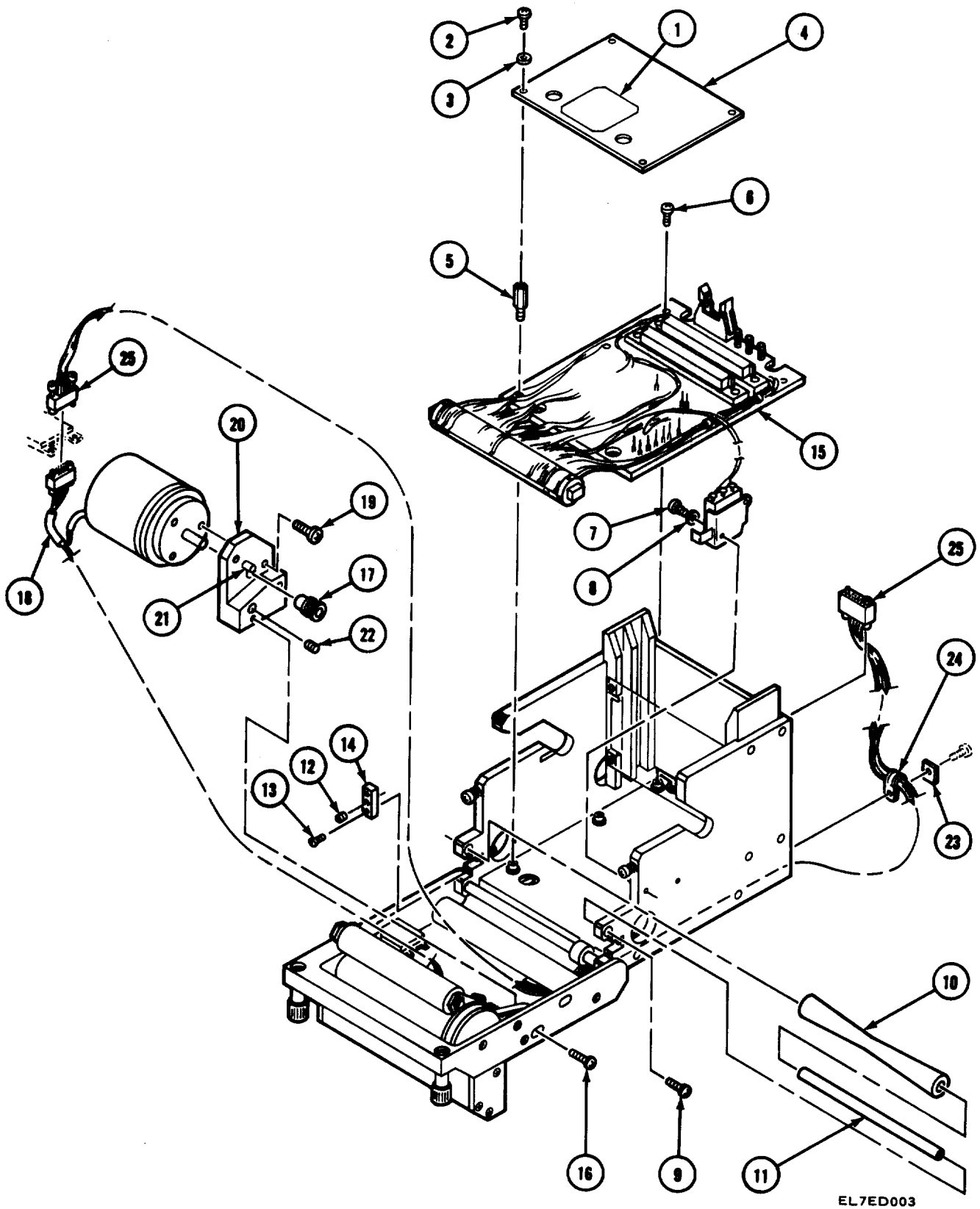
Figure 1. Teleprinter Electrographic TT-772(P)/G (Sheet 2 of 2)

SECTION II

TM11-7025-217-30P

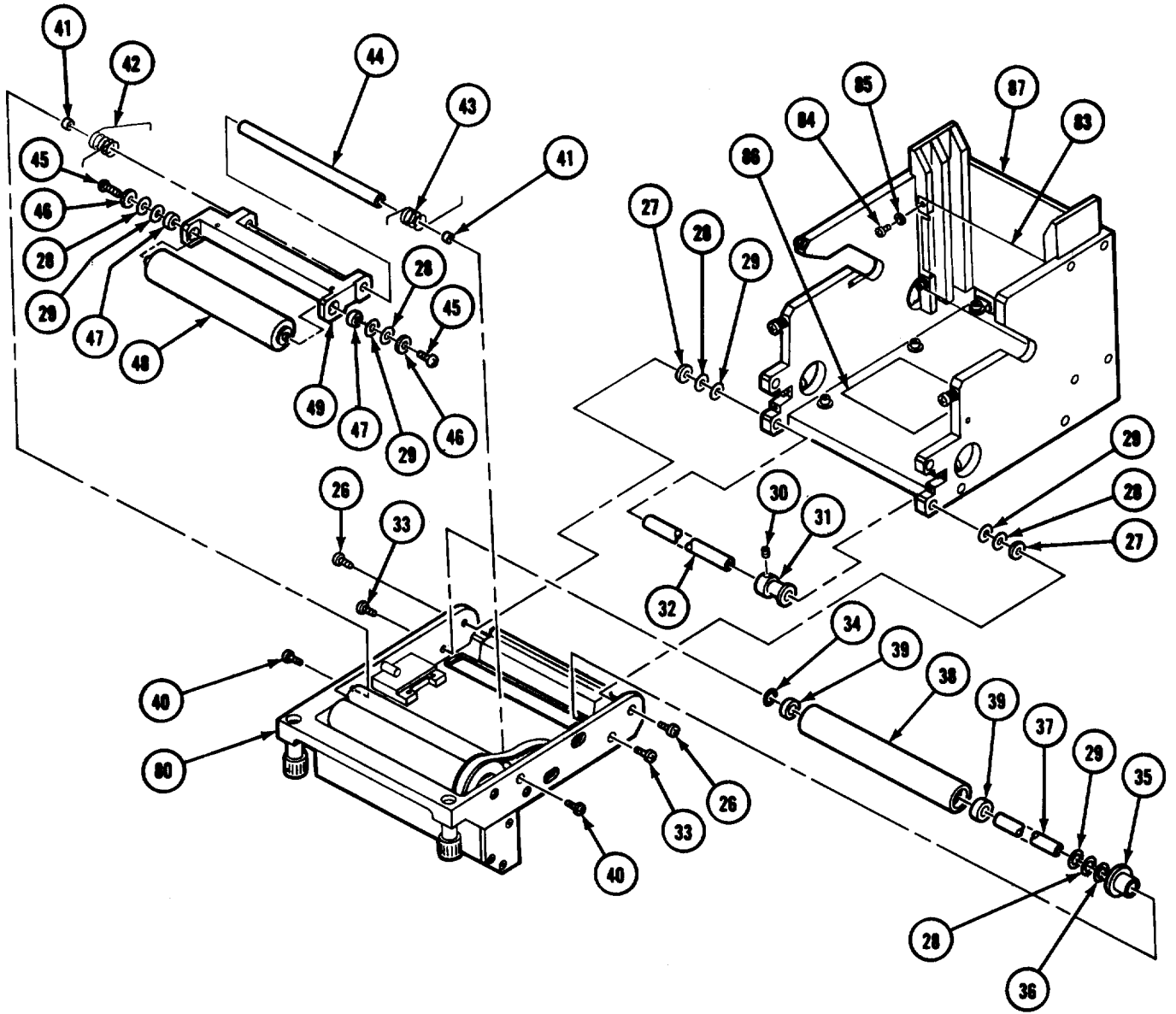
(1) ITEM NO	(2) SMR CODE	(3) FSCM	(4) PART NUMBER	(5) DESCRIPTION AND USABLE ON CODE (UOC)	(6) QTY
GROUP 00 TELEPRINTER ELECTROGRAPHIC TT-772(P)/G					
FIG. 1					
1	XBFZZ	19059	109906	PLATE INDENT	1
2	PAFZZ	96906	MS21318-14	SCREW,DRIVE	4
3	PAFZZ	19059	106595	PAPER,COPYING,DIREC	V
4	PAFFF	19059	108060-100	PAPER SPOOL ASSEMBL	1
5	XBFZZ	19059	107273	COVER PROTECTIVE	1
6	PAFZZ	96906	MS21209C0610	INSERT,SCREW THREAD	4
7	PAFZZ	96906	MS24693-4	SCREW,MACHINE	3
8	PAFZZ	96906	MS51957-13	SCREW,MACHINE	1
9	PAFZZ	88769	91921002	WASHER,FLAT	1
10	XBFZZ	19059	105713	PLUG CONNECTOR	1
11	PAFZZ	96906	MS51957-5	SCREW,MACHINE	2
12	PAFZZ	80205	NAS620C2	WASHER,FLAT	2
13	PAFZZ	72962	RMLH3858-26	NUT,SELF-LOCKING,EX	2
14	PAFZZ	96906	MS51958-63	SCREW,MACHINE	4
15	PAFZZ	13499	310-0740-560	WASHER,FLAT	4
16	XBFZZ	19059	109897-001	PLATE BACK	1
17	PAFZZ	96906	MS51957-28	SCREW,MACHINE	4
18	PAFZZ	96906	MS15795-806	WASHER,FLAT	4
19	XBFFF	19059	108629-100	PRINTER MECH SUBASS	1
20	PAFZZ	96906	MS51957-28	SCREW,MACHINE	4
21	PAFZZ	96906	MS15795-806	WASHER,FLAT	4
22	PAFZZ	86928	5602-63-32	WASHER	4
23	PAHHL	19059	109814-100	POWER SUPPLY	1
24	XBFZZ	19059	109885-100	HARNES,MAIN INTCON	1
25	PAFFF	19059	108625-100	CONTROL PANEL ASSEM	1
26	PAFZZ	96906	MS51957-13	SCREW,MACHINE	6
27	PAFZZ	88769	91921002	WASHER,FLAT	6
28	PAFZZ	75382	TYPE21	NUT,STUD,BARREL	6
29	PAFFH	19059	109883-100	CABLE ASSEMBLY,POWE	1
30	XBFFF	19059	108624-100	CABLE ASSY MTR/TK-U	1
31	PAFHH	19059	109881-100	CIRCUIT CARD ASSEMB	2
32	PAFZZ	19059	109876-100	HOUSING,PRINTER	1
33	XBFZZ	19059	109896-001	PLATE BASE	1

END OF FIGURE



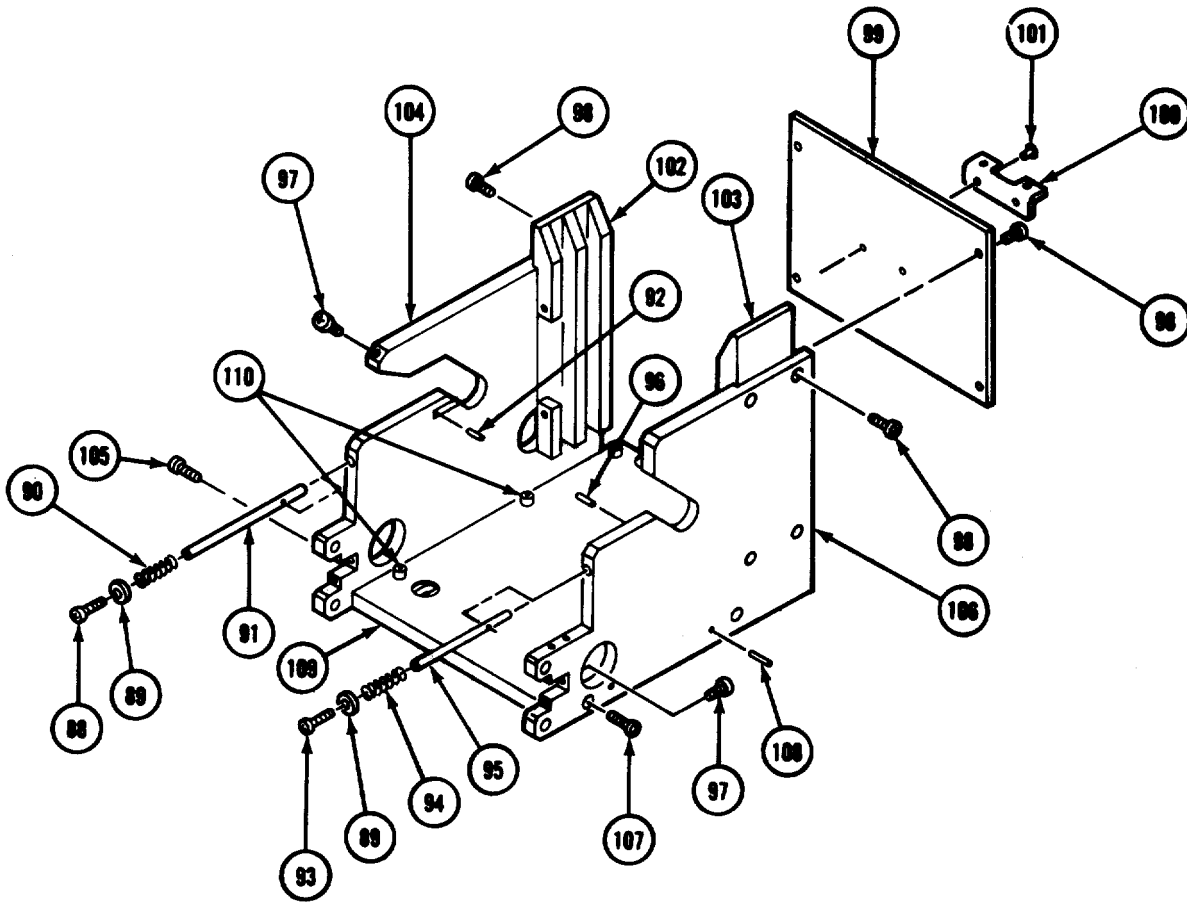
EL7ED003

Figure 2. Printer Mechanics Sub-Assembly (Sheet 1 of 4)



EL7ED004

Figure 2. Printer Mechanics Sub-Assembly (Sheet2 of 4)



EL7ED006

Figure 2. Printer Mechanics Sub-Assembly (Sheet 4 of 4)

(1) ITEM NO	(2) SMR CODE	(3) FSCM	(4) PART NUMBER	(5) DESCRIPTION AND USABLE ON CODE (UOC)	(6) QTY
GROUP 02 PRINTER MECHANICS SUB-ASSEMBLY					
FIG. 2					
1	XBFZZ	19059	105745	LABEL LOADING PTR	1
2	PAFZZ	96906	MS51957-13	SCREW,MACHINE	4
3	PAFZZ	80205	NAS620C4L	WASHER,FLAT	4
4	XBFZZ	19059	109884	COVER PIN	1
5	PAFZZ	19059	107245-001	STANDOFF,THREADED	4
6	PAFZZ	96906	MS51957-16	SCREW,MACHINE	2
7	PAFZZ	96906	MS51957-13	SCREW,MACHINE	2
8	PAFZZ	80205	NAS620C4L	WASHER,FLAT	2
9	PAFZZ	96906	MS51957-13	SCREW,MACHINE	2
10	XBFZZ	19059	107235	ROD PAPER SUPPLY	1
11	XBFZZ	19059	108632	BAR,TRACKING	1
12	PAFZZ	96906	MS51964-10	SETSCREW	2
13	PAFZZ	80205	NAS662C2R5	SCREW,MACHINE	4
14	XBFZZ	19059	108023	STOP PRINthead	2
15	PAFDD	19059	109877-100	PRINT SYSTEM ASSY	1
16	PAFZZ	96906	MS51957-29	SCREW,MACHINE	2
17	XBFZZ	19059	700044-001	PULLEY SMALL	1
18	XBFFF	19059	107298-100	MOTOR/DOOR ASSEMBLY	1
19	PAFZZ	96906	MS51957-44	SCREW,MACHINE	2
20	XBFZZ	19059	107224	PLATE MOUNTING MTR	1
21	PAFZZ	96906	MS9390-310	PIN,STRAIGHT,HEADLE	1
22	PAFZZ	96906	MS21209C0630	INSERT,SCREW THREAD	2
23	PAFZZ	45413	G4238-4	WASHER,SADDLE	1
24	PAFZZ	80205	NAS1397P2B	CLAMP,LOOP	1
25	PAFFF	19059	109898-100	WIRING HARNESS	1
26	PAFZZ	96906	MS51957-13	SCREW,MACHINE	2
27	PAFZZ	19059	700042-0011	WASHER,SPRING TENSI	2
28	XBFZZ	19059	700022-0018	SHIM (SELECT AT ASSY)	V
29	XBFZZ	19059	700022-0015	SHIM (SELECT AT ASSY)	V
30	PAFZZ	96906	MS51021-9	SETSCREW	1
31	XBFZZ	19059	107279	SPACER WIRE GUIDE	1
32	XBFZZ	19059	107227-2	SHAFT COMMON	1
33	PAFZZ	96906	MS51957-13	SCREW,MACHINE	2
34	XBFZZ	19059	700022-0021	SHIM	1
35	XBFZZ	19059	107280	SPACER SMALL GUIDE	1
36	XBFZZ	19059	700022-0022	SHIM (SELECT AT ASSY)	V
37	XBFZZ	19059	107227-2	SHAFT COMMON	1
38	XBFZZ	19059	108036-100	COMMON ROLLER ASSY	1
39	XBFZZ	50294	SSR-3LLRA3P25L01	BEARING BALL ANNULA	2
40	PAFZZ	96906	MS51957-13	SCREW,MACHINE	2
41	XBFZZ	19059	107237-1	SPACER	1
42	XBFZZ	83553	T045-270-234L	SPRING PRESS ROLLER	1
43	XBFZZ	19059	700043-0002	SPRING PRESS ROLLER	1
44	XBFZZ	19059	107227-2	SHAFT COMMON	1
45	PAFZZ	96906	MS51849-11	SCREW,MACHINE	2
46	PAFZZ	80205	NAS620C4L	WASHER,FLAT	2

SECTION II

TM11-7025-217-30P

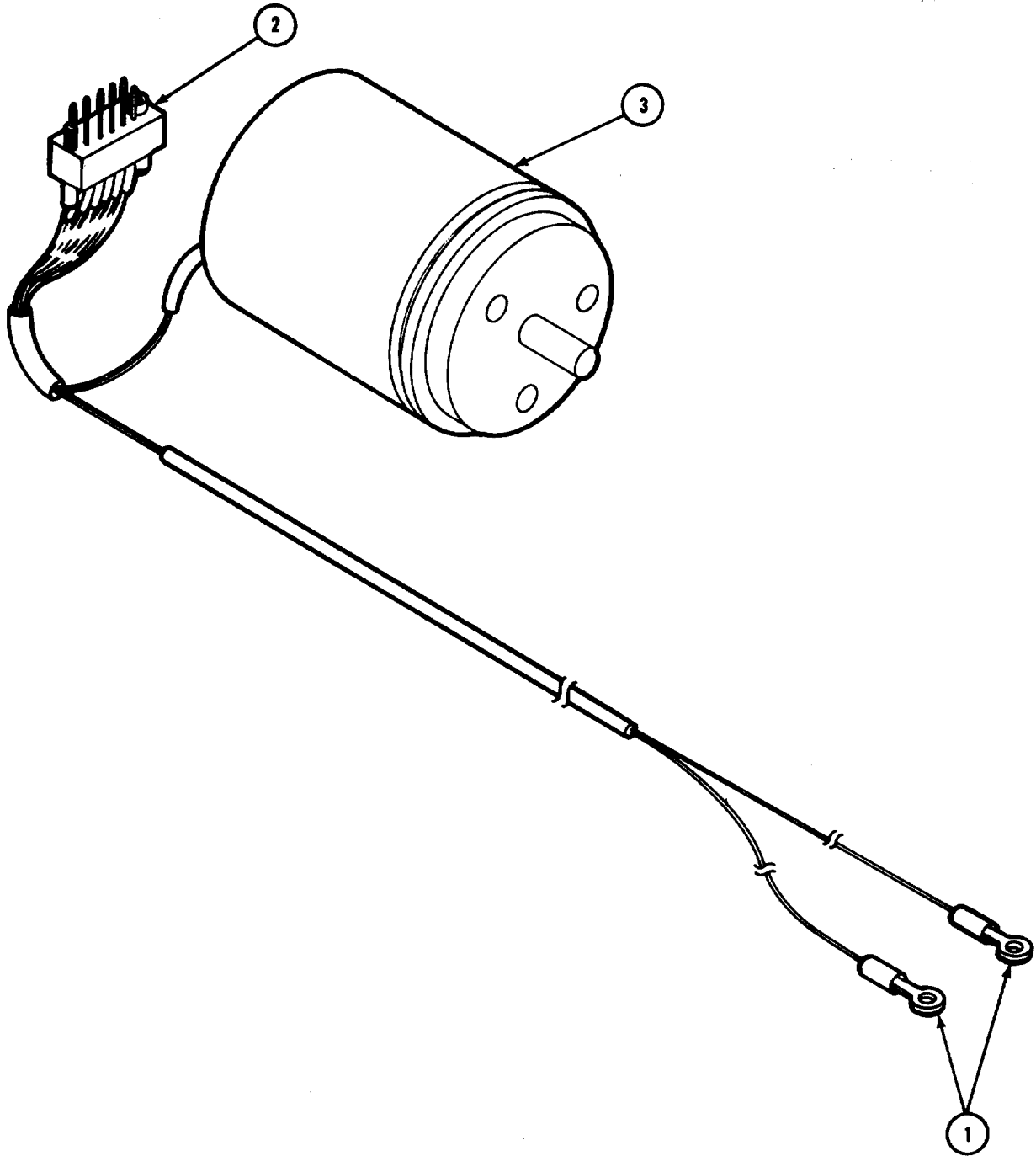
(1) ITEM NO	(2) SMR CODE	(3) FSCM	(4) PART NUMBER	(5) DESCRIPTION AND USABLE ON CODE (UOC)	(6) QTY
47	XBFZZ	50294	SSRIF-5632LLRA3P	BEARING, BALL, ANNUL	2
48	XBFZZ	19059	107217	ROLLER PINCH	1
49	XBFZZ	19059	108075	SUPPORT ROLLER	1
50	PAFZZ	96906	MS51957-13	SCREW, MACHINE	2
51	XBFZZ	19059	107237-5	SPACER	1
52	XBFZZ	19059	107227-2	SHAFT COMMON	1
53	XBFZZ	50294	SSR-3LLRA3P25L01	BEARING BALL ANNULA	2
54	XBFZZ	19059	700018-002	MOUNT BEARING	2
55	XBFZZ	19059	107232	ROLLER IDLER	1
56	PAFZZ	96906	MS51957-13	SCREW, MACHINE	2
57	PAFZZ	19059	108016	SETSCREW	2
58	PAFZZ	19059	700045-001	BELT DRIVE	1
59	PAFZZ	96906	MS51021-23	SETSCREW	2
60	XBFZZ	19059	107306	PULLEY LARGE	1
61	XBFZZ	19059	107227-1	SHAFT DRIVE ROLLER	1
62	XBFZZ	50294	SSRI-6632ZZRA3P2	BEARING BALL ANNULA	2
63	XBFZZ	19059	107322	ROLLER DRIVE	1
64	PAFZZ	03640	6079033	SCREW, MACHINE	3
65	XBFZZ	19059	107278	REFLECTOR RIGHT	1
66	PAFZZ	03640	6079033	SCREW, MACHINE	3
67	XBFZZ	19059	107277	REFLECTOR LEFT	1
68	PAFZZ	03640	6079033	SCREW, MACHINE	2
69	XBFZZ	19059	107228	REFLECTOR UPPER	1
70	PAFZZ	96906	MS51957-3	SCREW, MACHINE	2
71	PAFZZ	80205	NAS620C2	WASHER FLAT	4
72	XBFZZ	19059	107307	TERMINAL ILLUM	2
73	XBFZZ	19059	107286-100	PWB, ILLUMINATION	1
74	PAFZZ	96906	MS51957-3	SCREW, MACHINE	2
75	PAFZZ	80205	NAS620C2	WASHER, FLAT	2
76	XBFZZ	19059	107225	REFLECTOR SUPPORT	1
77	PAFZZ	03640	6079033	SCREW, MACHINE	2
78	PAFZZ	19059	107293	BRACKET	1
79	PAFZZ	96906	MS51957-13	SCREW, MACHINE	2
80	XBFZZ	19059	107222	DOOR MACHINING	1
81	XBFZZ	19059	700015-162	FASTENER CAPTIVE	2
82	PAFZZ	96906	MS9390-300	PIN, STRAIGHT, HEADLE	1
83	XBFZZ	19059	109909	GUARD PAPER	1
84	PAFZZ	96906	MS51957-13	SCREW, MACHINE	4
85	PAFZZ	96906	MS15795-804	WASHER, FLAT	4
86	XBFZZ	19059	107305-004	GASKET, THERMAL (SELECT AT ASSY)	V
87	XBFFF	19059	109900-100	FRAME ASSY PRINTHD	1
88	PAFZZ	96906	MS15957-2	SCREW	1
89	XBFZZ	19059	700022-0003	SHIM (SELECT AT ASSY)	V
90	PAFZZ	84830	LC-014B-11	SPRING, HELICAL, COMP	1
91	XBFZZ	19059	107283-001	ROD LOCKING LEFT	1
92	PAFZZ	96906	MS16562-189	PIN, SPRING	1
93	PAFZZ	96906	MS15957-2	SCREW	1
94	PAFZZ	84830	LC-014B-11	SPRING, HELICAL, COMP	1
95	XBFZZ	19059	107282-001	ROD LOCKING RIGHT	1
96	PAFZZ	96906	MS16562-189	PIN, SPRING	1
97	PAFZZ	96906	MS16995-10	SCREW, CAP, SOCKET HE	3
98	PAFZZ	96906	MS51957-14	SCREW, MACHINE	4

SECTION II

TM11-7025-217-30P

(1) ITEM NO	(2) SMR CODE	(3) FSCM	(4) PART NUMBER	(5) DESCRIPTION AND USABLE ON CODE (UOC)	(6) QTY
99	XBFZZ	19059	109897-001	PLATE, BACK	1
100	XBFZZ	19059	108628	BRACKET MTG CONN	1
101	PAFZZ	96906	MS20426A4-6	RIVET, SOLID	2
102	XBFZZ	19059	109899-002	GUIDE CARD L	1
103	XBFZZ	19059	109899-001	GUIDE CARD R	1
104	XBFZZ	19059	109895-001	PLATE LEFT	1
105	PAFZZ	96906	MS51957-28	SCREW, MACHINE	2
106	XBFZZ	19059	109894-001	PLATE RIGHT	1
107	PAFZZ	96906	MS51957-28	SCREW, MACHINE	2
108	PAFZZ	96906	MS9390-170	PIN, STRAIGHT, HEADLE	4
109	PAFZZ	96906	MS51557-5	SCREW, MACHINE	1
110	XBFZZ	46384	SOS-6440-16	STANDOFF SELF CLNCH	6

END OF FIGURE



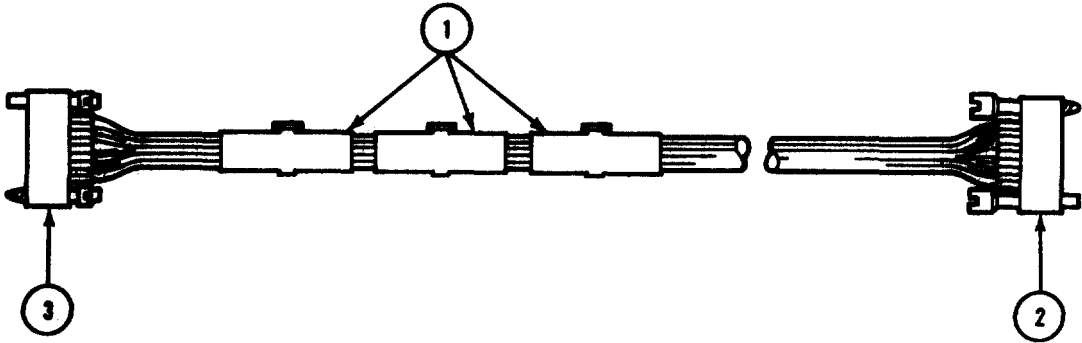
EL7ED007

Figure 3. Stepper Motor and Door Harness Assembly

TM11-7025-217-30P

(1) ITEM NO	(2) SMR CODE	(3) FSCM	(4) PART NUMBER	(5) DESCRIPTION AND USABLE ON CODE (UOC)	(6) QTY
				GROUP 0202 STEPPER MOTOR AND DOOR HARNES ASSEMBLY	
				FIG. 3	
1	PAFZZ	96906	MS25036-143	TERMINAL,LUG	2
2	PAFZZ	81349	M55302/56-A10	CONNECTOR,RECEPTACL	1
3	PAFZZ	19059	107216	MOTOR	1

END OF FIGURE



EL7ED008

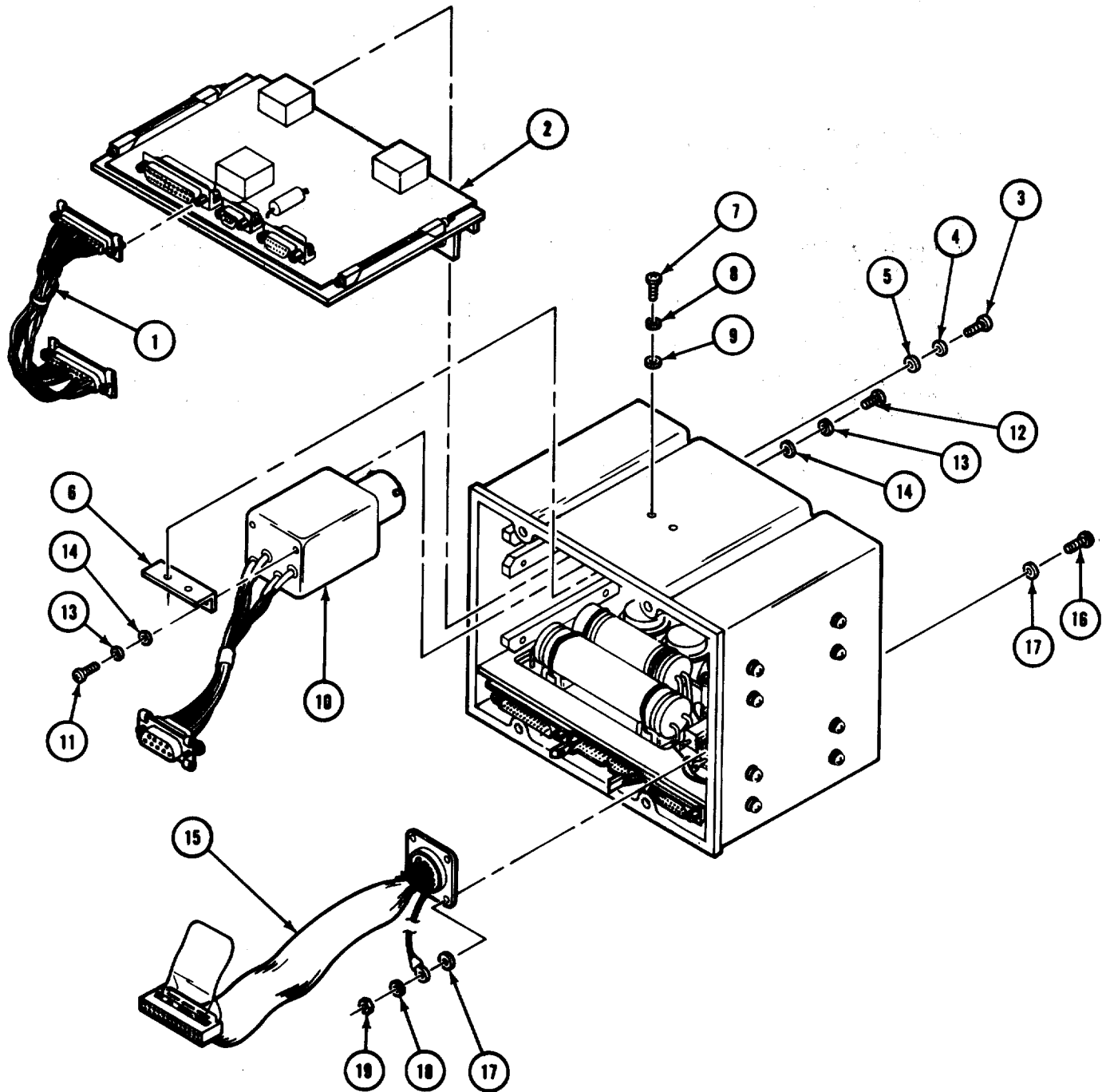
Figure 4. Motor Harness Assembly

SECTION II

TM11-7025-217-30P

(1) ITEM NO	(2) SMR CODE	(3) FSCM	(4) PART NUMBER	(5) DESCRIPTION AND USABLE ON CODE (UOC)	(6) QTY
GROUP 0203 MOTOR HARNESS ASSEMBLY					
FIG. 4					
1	PAFZZ	81349	MS3368-5-9E	STRAP, TIEDOWN, ELECT	3
2	PAFZZ	81349	M55302/55-A10M	CONNECTOR, PLUG, ELEC	1
3	PAFZZ	81349	M55302/56-A10F	CONNECTOR, RECEPTACL	1

END OF FIGURE



EL7ED009

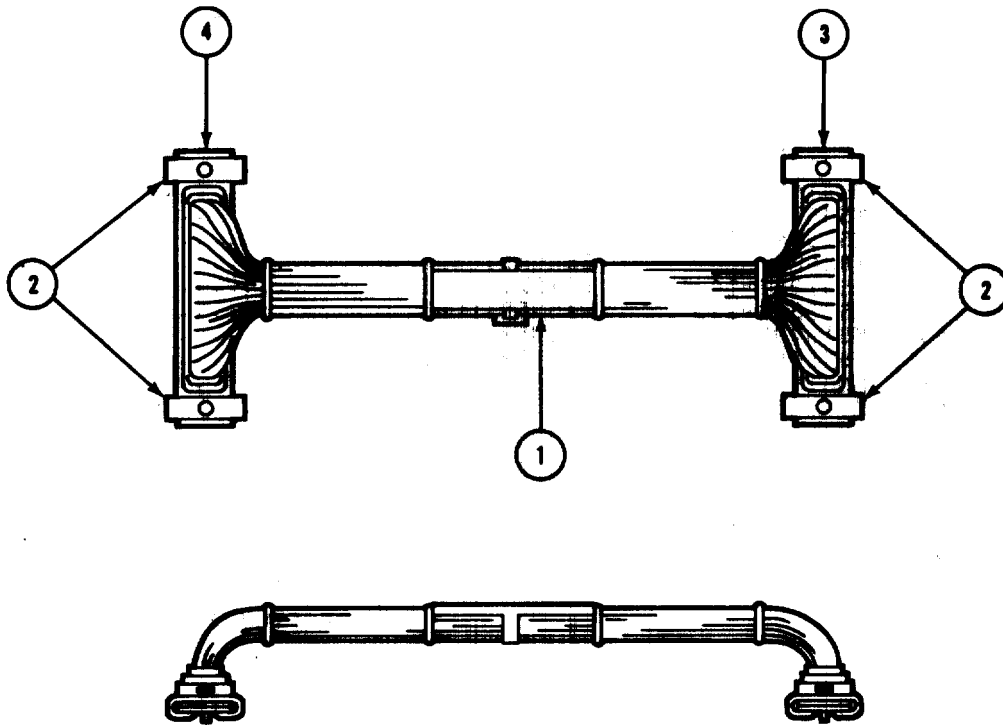
Figure 5. DC Power Supply

SECTION II

TM11-7025-217-30P

(1) ITEM NO	(2) SMR CODE	(3) FSCM	(4) PART NUMBER	(5) DESCRIPTION AND USABLE ON CODE (UOC)	(6) QTY
GROUP 03 DC POWER SUPPLY					
FIG. 5					
1	XBFFF	19059	108623-100	CABLE ASSY INTCON	1
2	PAFFF	19059	109861-100	CONVERTER ASSEMBLY	1
3	PAFZZ	96906	MS51957-16	SCREW MACHINE	3
4	PAFZZ	96906	MS35338	WASHER, LOCK	3
5	PAFZZ	96906	MS15795-803	WASHER, FLAT	3
6	XBFZZ	19059	108622	BRACKET SUPPORT	1
7	PAFZZ	96906	MS51957-14	SCREW, MACHINE	2
8	PAFZZ	96906	MS35338-135	WASHER, LOCK	2
9	PAFZZ	96906	MS15795-803	WASHER, FLAT	2
10	PAFFF	19059	109869-100	FILTER ASSEMBLY, ELE	1
11	PAFZZ	96906	MS51957-13	SCREW, MACHINE	6
12	PAFZZ	96906	MS51957-16	SCREW, MACHINE	4
13	PAFZZ	96906	MS35338-135	WASHER, LOCK	6
14	PAFZZ	96906	MS15795-803	WASHER, FLAT	6
15	PAFFF	19059	109870-100	CABLE ASSEMBLY SET	1
16	PAFZZ	96906	MS51957-16	SCREW, MACHINE	4
17	PAFZZ	96906	MS15795-803	WASHER, FLAT	8
18	PAFZZ	96906	MS35338-135	WASHER, LOCK	4
19	PAFZZ	96906	MS35649-244	NUT, PLAIN, HEXAGON	4

END OF FIGURE



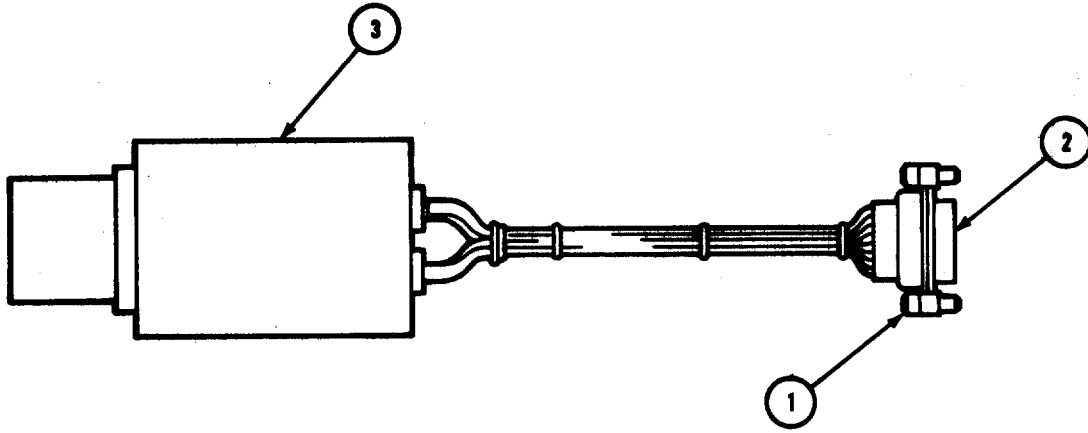
EL7ED010

Figure 6. Power Supply Interconnect Cable Assembly

SECTION II

TM11-7025-217-30P

(1) ITEM NO	(2) SMR CODE	(3) FSCM	(4) PART NUMBER	(5) DESCRIPTION AND USABLE ON CODE (UOC)	(6) QTY
GROUP 0301 POWER SUPPLY INTERCONNECT CABLE ASSEMBLY					
FIG. 6					
1	PAFZZ	96906	MS3368-5	MARKER TIE	1
2	PAFZZ	81349	M24308/25-9	SCREW-LOCK ASSEMBLY	4
3	PAFZZ	81349	M24308/4-3	CONNECTOR, RECEPTACL	1
4	PAFZZ	81349	M24308/2-3	CONNECTOR, RECEPTACL	1
END OF FIGURE					



EL7ED011

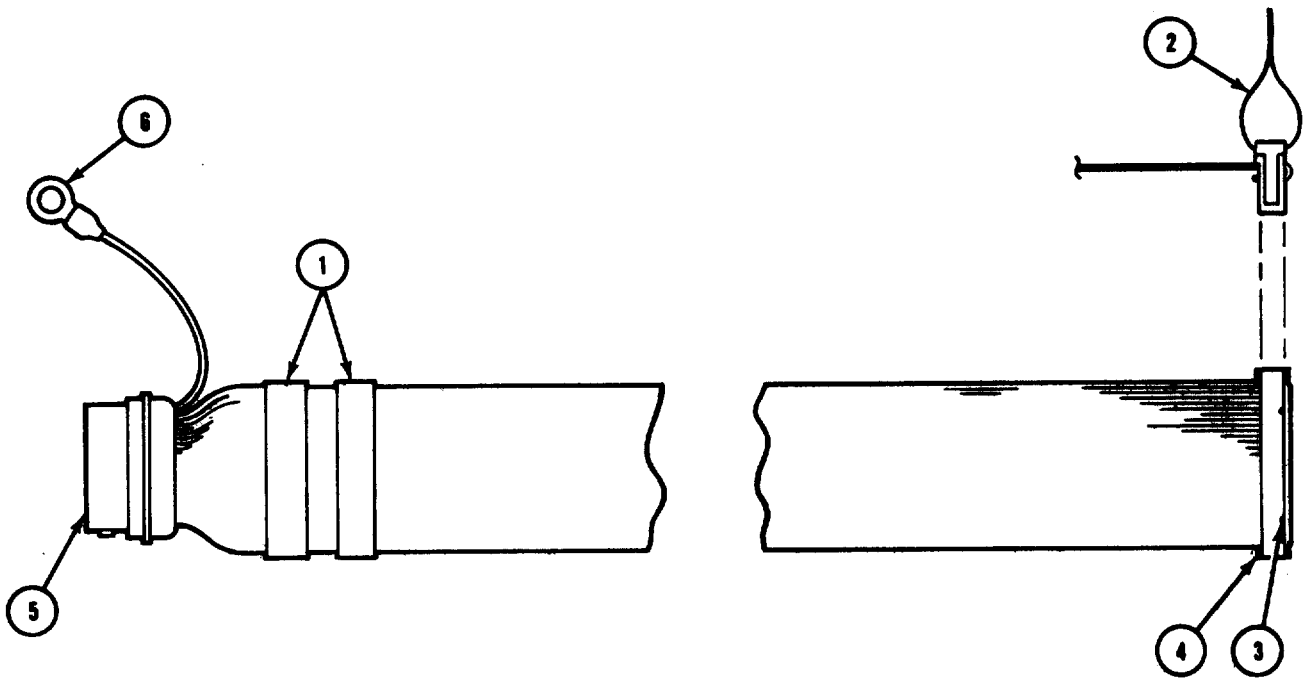
Figure 7. Input Power Filter Assembly

SECTION II

TM11-7025-217-30P

(1) ITEM NO	(2) SMR CODE	(3) FSCM	(4) PART NUMBER	(5) DESCRIPTION AND USABLE ON CODE (UOC)	(6) QTY
				GROUP 0304 INPUT POWER FILTER ASSEMBLY	
				FIG. 7	
1	PAFZZ	81349	M24308/25-9	SCREW-LOCK ASSEMBLY	2
2	PAFZZ	81349	M24308/2-1	CONNECTOR, RECEPTACL	1
3	XAFZZ	19059	905094-001	FILTER EMI	1

END OF FIGURE



EL7ED012

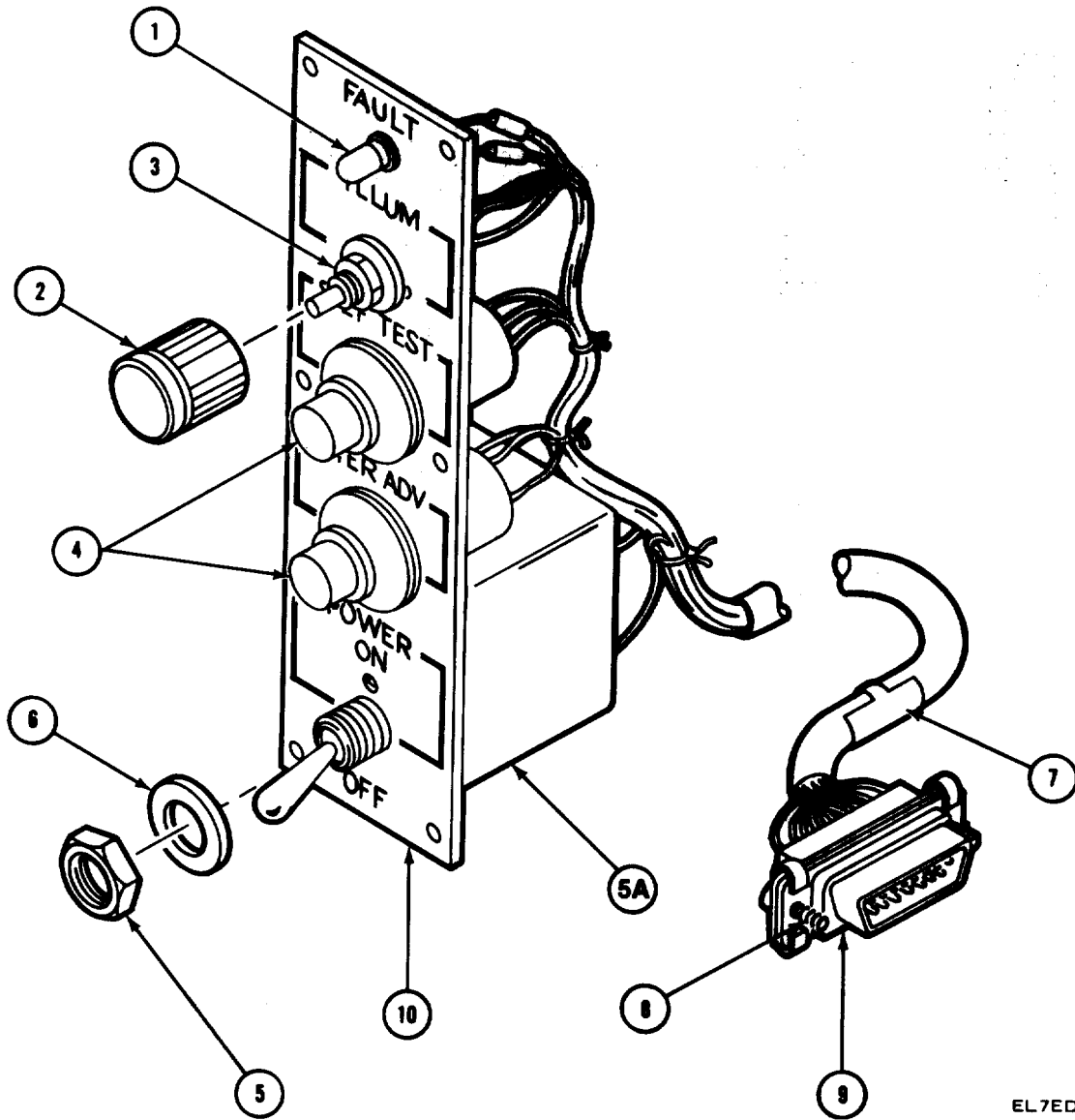
Figure 8. Input Data Cable Assembly

SECTION II

TM11-7025-217-30P

(1) ITEM NO	(2) SMR CODE	(3) FSCM	(4) PART NUMBER	(5) DESCRIPTION AND USABLE ON CODE (UOC)	(6) QTY
GROUP 0305 INPUT DATA CABLE ASSEMBLY					
FIG. 8					
1	PAFZZ	96906	MS3368-1	MARKER TIE	2
2	PAFZZ	28218	3490-2	PULL TAB	1
3	PAFZZ	75037	3435-0000	HOLDER, ELECTRICAL C	1
4	PAFZA	81349	M83503/7-06	CONNECTOR, PLUG, ELEC	1
5	PAFZZ	96906	MS27508E16F35S	CONNECTOR, RECEPTACL	1
6	PAFZZ	81349	M24308/2-1	CONNECTOR, RECEPTACLE	1

END OF FIGURE



EL7ED013

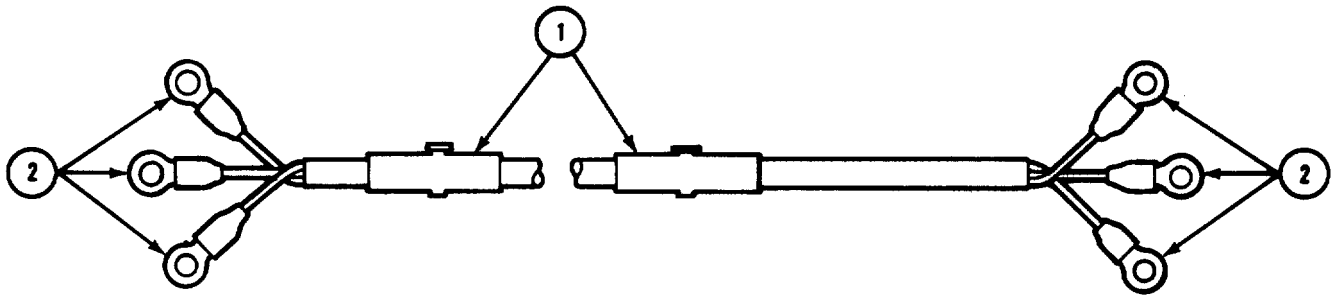
Figure 9. Control Panel Assembly

SECTION II

TM11-7025-217-30P

(1) ITEM NO	(2) SMR CODE	(3) FSCM	(4) PART NUMBER	(5) DESCRIPTION AND USABLE ON CODE (UOC)	(6) QTY
GROUP 05 CONTROL PANEL ASSEMBLY					
FIG. 9					
1	PAOZZ	81349	LHC82/1RT2	LIGHT, INDICATOR	1
2	PAOZZ	19059	106751	KNOB	1
3	PAFZZ	81349	RV6NAYSB102A	RESISTOR, VARIABLE, N	1
4	PAFZZ	96906	MS25089-3C	SWITCH, PUSH	2
5	PAFZZ	46384	SOS-6440-8	NUT, PLAIN, CLINCH	1
5A	PAFZZ	19059	700211-0002	CIRCUIT BREAKER	1
6	PAFZZ	88044	AN960C616L	WASHER, FLAT	1
7	PAFZZ	96906	MS3368-5	MARKER TIE	1
8	PAFZZ	81349	M24308/25-9	SCREW-LOCK ASSEMBLY	2
9	PAFZZ	81349	M24308/4-2	CONNECTOR, RECEPTACL	1
10	XBFZZ	19059	105705-002	CONTROL PANEL	1

END OF FIGURE



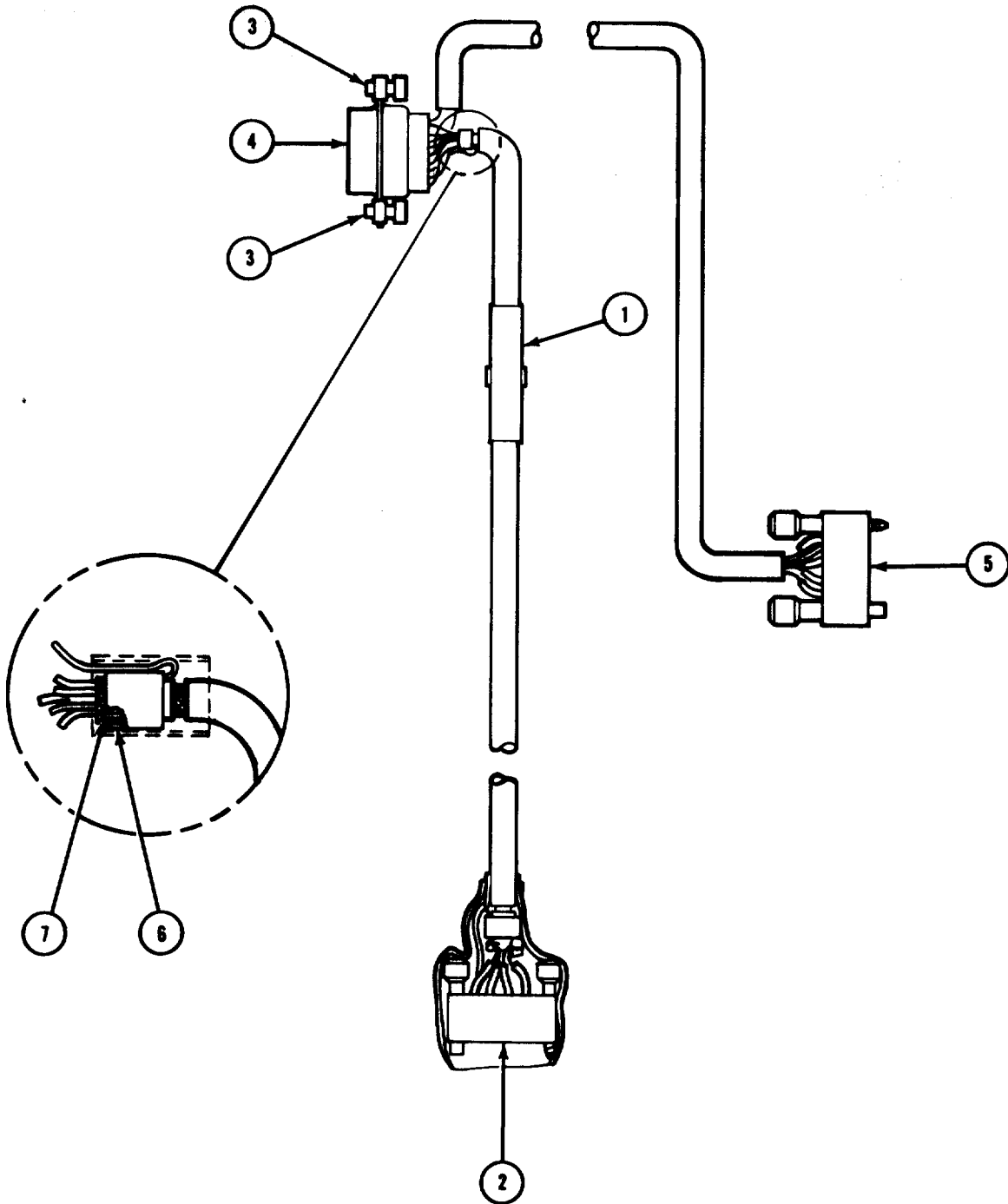
EL7ED014

Figure 10. Power Cable

SECTION II

TM11-7025-217-30P

(1) ITEM NO	(2) SMR CODE	(3) FSCM	(4) PART NUMBER	(5) DESCRIPTION AND USABLE ON CODE (UOC)	(6) QTY
				GROUP 06 POWER CABLE	
				FIG. 10	
1	PAFZZ	96906	MS3368-5-9E	STRAP, TIEDOWN, ELECT	2
2	PAFZZ	96906	MS25036-101	TERMINAL, LUG	6
				END OF FIGURE	



EL7ED015

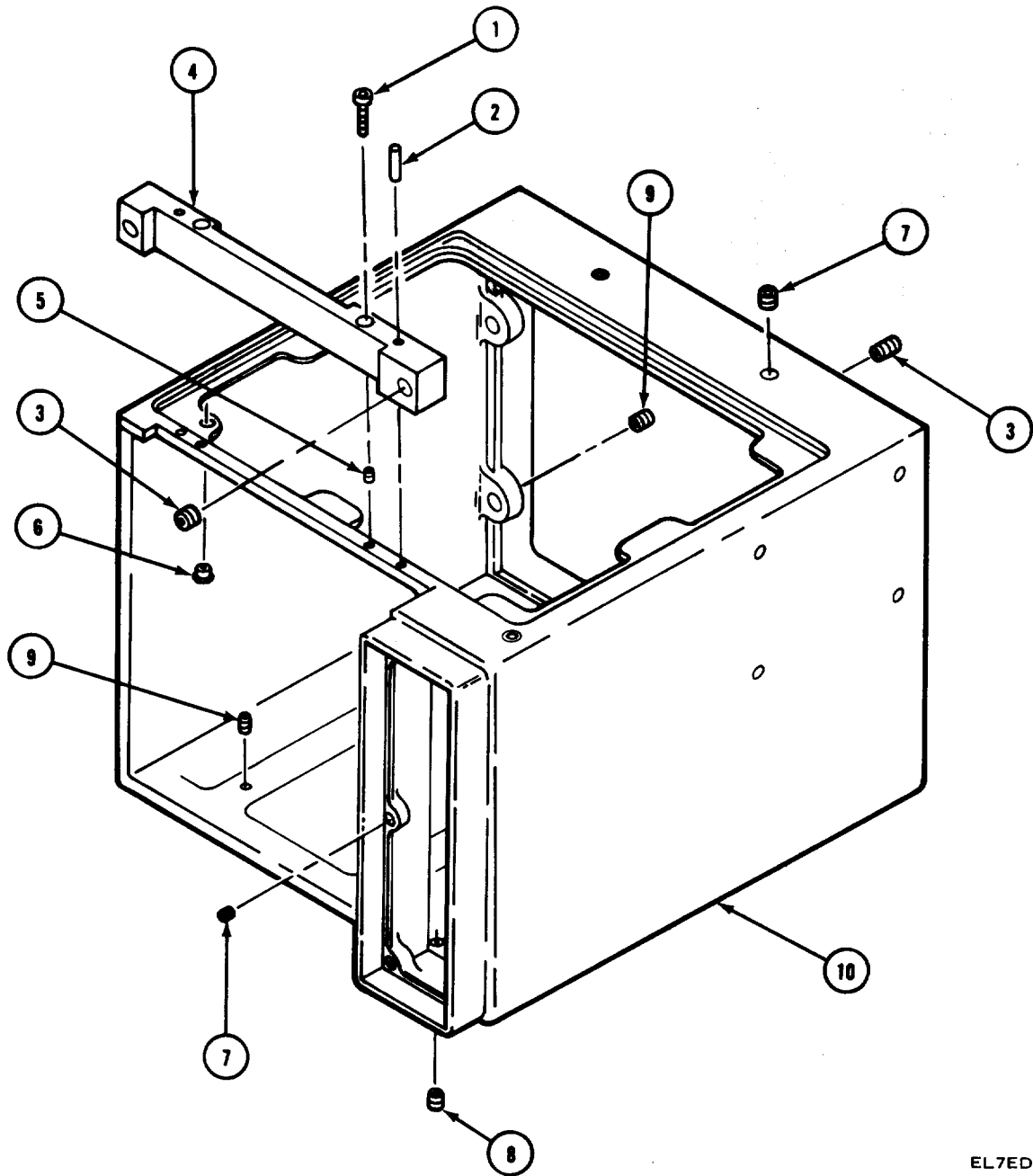
Figure 11. Motor/Take-up Cable

SECTION II

TM11-7025-217-30P

(1) ITEM NO	(2) SMR CODE	(3) FSCM	(4) PART NUMBER	(5) DESCRIPTION AND USABLE ON CODE (UOC)	(6) QTY
GROUP 07 MOTOR/TAKE-UP CABLE					
FIG. 11					
1	PAFZZ	96906	MS3368-5	MARKER TIE	1
2	PAFZZ	81349	M55302/64A10F	CONNECTOR, RECEPTACL	1
3	PAFZZ	81349	M24308/25-9	SCREW-LOCK ASSEMBLY	2
4	PAFZZ	81349	M24308/4-2	CONNECTOR, RECEPTACL	1
5	PAFZZ	81349	M55302/55-A10M	CONNECTOR, PLUG, ELEC	1
6	PAFZZ	96906	MS21980-225	FERRULE, METALLIC SH	2
7	PAFZZ	96906	MS21981-149	FERRULE, METALLIC SH	2

END OF FIGURE



EL7ED016

Figure 12. Console Machining

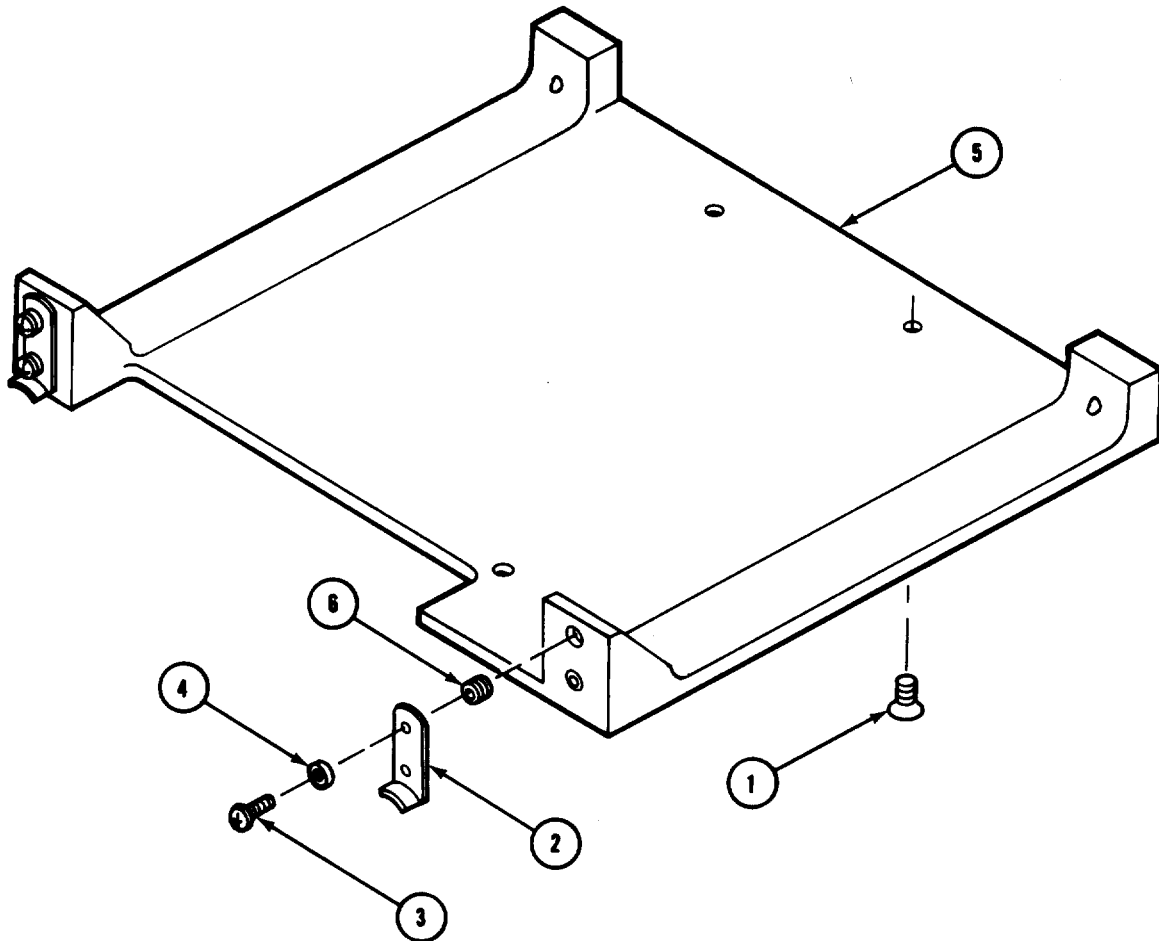
SECTION II

TM11-7025-217-30P

(1) ITEM NO	(2) SMR CODE	(3) FSCM	(4) PART NUMBER	(5) DESCRIPTION AND USABLE ON CODE (UOC)	(6) QTY
GROUP 09 CONSOLE MACHINING					
FIG. 12					
1	PAFZZ	96906	MS16995-11	SCREW,CAP,SOCKET HE	2
2	PAFZZ	96906	MS9390-190	PIN,STRAIGHT,HEADLE	2
3	PAFZZ	96906	MS2109F1-15	INSERT,SCREW THREAD	6
4	XBFZZ	19059	107272	JAMB DOOR	1
5	PAFZZ	96906	MS21209C0410	INSERT,SCREW THREAD	2
6	XBFZZ	46384	SOS-6440-4	STANDOFF SELF-CLNCH	1
7	PAFZZ	96906	MS21209C0415	INSERT,SCREW THREAD	9
8	PAFZZ	96906	MS21209F4-15	INSERT,SCREW THREAD	3
9	PAFZZ	96906	MS21209C0615	INSERT,SCREW THREAD	4
10	XAFZZ	19059	102051	CASTING CONSOLE	1

END OF FIGURE

END OF FIGURE



EL7ED017

Figure 13. Printer Jeep Mounting Kit (Accessory)

SECTION II

TM11-7025-217-30P

(1) ITEM NO	(2) SMR CODE	(3) FSCM	(4) PART NUMBER	(5) DESCRIPTION AND USABLE ON CODE (UOC)	(6) QTY
GROUP 10 PRINTER JEEP MOUNTING KIT (ACCESSORY)					
FIG. 13					
1	PAOZZ	96906	MS51960-84	SCREW, MACHINE	2
2	PAFZZ	81860	43-9507-01-901	STRIKE,CATCH (ACCESSORY ITEM)	2
3	PAFZZ	96906	MS51957-43	SCREW,MACHINE (ACCESSORY ITEM)	4
4	PAFZZ	80205	NAS620C8	WASHER,FLAT (ACCESSORY ITEM)	4
5	PAFZZ	19059	105707	PLATE,MOUNTING (ACCESSORY ITEM)	1
6	PAFZZ	96906	MS21209C0815	INSERT,SCREW THREAD (ACCESSORY ITEM)	4

END OF FIGURE

NATIONAL STOCK NUMBER AND PART NUMBER INDEX

NOTE: LATEST PART NUMBER ASSIGNMENTS ARE INCLUDED AT END OF INDEX.

NATIONAL STOCK NUMBER INDEX					
STOCK NUMBER	FIG.	ITEM	STOCK NUMBER	FIG.	ITEM
5340-00-008-7100	2	22	5935-00-489-9999	6	3
5310-00-043-4708	1	12	5935-00-490-3743	9	9
	2	71		11	4
	2	75	5935-00-490-5219	7	2
5305-00-054-5637	2	70	5930-00-501-1749	9	4
	2	74	5940-00-503-6173	11	6
5305-00-054-5639	1	11	5905-00-578-4131	9	3
5305-00-054-5647	1	8	5310-00-595-6211	5	9
	1	26		5	14
	2	2		5	17
	2	7	5340-00-631-7894	12	7
	2	9	5310-00-655-9401	2	23
	2	26	5940-00-688-6005	3	1
	2	33	5305-00-719-5093	13	1
	2	40	5310-00-723-9676	2	3
	2	50		2	8
	2	56		2	46
	2	79	5305-00-724-5395	2	12
	2	84	5940-00-754-7238	11	7
	5	11	5310-00-782-1349	2	85
5305-00-054-5648	2	98	5305-00-800-7261	2	30
	5	7	5940-00-813-0698	10	2
5305-00-054-5650	2	6	5310-00-813-6950	1	13
	5	12	5305-00-814-1707	2	64
	5	16		2	66
5305-00-054-6652	1	17		2	68
	1	20		2	77
	2	105	5340-00-815-4929	13	6
	2	107	5340-00-815-4930	12	9
5305-00-054-6653	2	16	5340-00-829-2141	12	8
5305-00-054-6668	13	3	5305-00-833-7228	2	13
5305-00-054-6669	2	19	5310-00-880-5976	1	18
5310-00-057-0573	1	9		1	21
	1	27	5315-00-899-3103	2	82
5305-00-059-3659	1	14	5340-00-917-4549	13	2
5305-00-068-5414	12	1	5315-00-923-6750	2	108
5310-00-069-5291	13	4	5315-00-928-9534	12	2
5320-00-117-6963	2	101	5310-00-933-8118	5	8
5305-00-164-7082	2	45		5	13
5305-00-175-3230	1	2		5	18
5310-00-183-4355	9	6	5310-00-934-9748	5	19
6210-00-226-4542	9	1	5305-00-959-0379	2	97
5340-00-245-5195	1	6	5315-00-959-6760	2	21
5340-00-263-8728	12	5	5340-00-985-6633	2	24
5305-00-272-4123	2	59	5310-00-989-0640	1	15
5315-00-291-5471	2	92	5935-01-023-4847	8	5
	2	96	5999-01-054-8002	8	3
5935-00-410-9250	6	4	5935-01-058-9270	11	2
5975-00-482-3954	4	1	5355-01-065-9289	9	2
	10	1	5935-01-067-2976	3	2

NATIONAL STOCK NUMBER AND PART NUMBER INDEX

STOCK NUMBER	NATIONAL STOCK NUMBER INDEX		FIG.	ITEM
	FIG.	ITEM		
7530-01-103-8267	1	3		
5935-01-128-3639	8	4		
5935-01-136-6506	4	2		
	11	5		
5305-01-148-4476	1	7		
5995-01-156-0433	2	25		
5815-01-158-2965	1	25		
5815-01-158-2966	1	4		
5995-01-158-2992	5	15		
5995-01-158-2995	1	29		
5815-01-158-3003	1	31		
6105-01-159-4968	3	3		
5310-01-160-1814	1	22		
5310-01-160-7321	2	27		
5305-01-160-7322	2	57		
5915-01-170-5086	5	10		
5925-01-173-9924	9	5A		
5935-01-179-3497	6	2		
	7	1		
	9	8		
	11	3		
5815-01-188-0356	2	15		
5815-01-190-7492	1	32		
5360-01-196-2427	2	90		
	2	94		
5815-01-198-6804	2	58		
5340-01-215-5079	2	78		

NATIONAL STOCK NUMBER AND PART NUMBER INDEX

PART NUMBER INDEX				
FSCM	PART NUMBER	STOCK NUMBER	FIG.	ITEM
88044	AN960C616L	5310-00-183-4355	9	6
45413	G4238-4	5310-00-655-9401	2	23
84830	LC-014B-11	5360-01-196-2427	2	90
			2	94
81349	LHC82/1RT2	6210-00-226-4542	9	1
96906	MS15795-803	5310-00-595-6211	5	5
			5	9
			5	14
			5	17
96906	MS15795-804	5310-00-782-1349	2	85
96906	MS15795-806	5310-00-880-5976	1	18
			1	18
			1	21
96906	MS15957-2		2	88
			2	93
96906	MS16562-189	5315-00-291-5471	2	92
			2	96
96906	MS16995-10	5305-00-959-0379	2	97
96906	MS16995-11	5305-00-068-5414	12	1
96906	MS20426A4-6	5320-00-117-6963	2	101
96906	MS2109F1-15		12	3
96906	MS21209C0410	5340-00-263-8728	12	5
96906	MS21209C0415	5340-00-631-7894	12	7
96906	MS21209C0610	5340-00-245-5195	1	6
96906	MS21209C0615	5340-00-815-4930	12	9
96906	MS21209C0630	5340-00-008-7100	2	22
96906	MS21209C0815	5340-00-815-4929	13	6
96906	MS21209F4-15	5340-00-829-2141	12	8
96906	MS21318-14	5305-00-175-3230	1	2
96906	MS21980-225	5940-00-503-6173	11	6
96906	MS21981-149	5970-00-754-7238	11	7
96906	MS24693-4	5305-01-148-4476	1	7
96906	MS25036-101	5940-00-813-0698	10	2
96906	MS25036-143	5940-00-688-6005	3	1
96906	MS25089-3C	5930-00-501-1749	9	4
96906	MS27508E16F35S	5935-01-023-4847	8	5
96906	MS3368-1		8	1
96906	MS3368-5		6	1
			9	7
			11	1
81349	MS3368-5-9E	5975-00-482-3954	4	1
			10	1
96906	MS35338		5	4
96906	MS35338-135	5310-00-933-8118	5	8
			5	13
			5	18
96906	MS35649-244	5310-00-934-9748	5	19
96906	MS51021-23	5305-00-272-4123	2	59
96906	MS51021-9	5305-00-800-7261	2	30
96906	MS51557-5		2	109
96906	MS51849-11	5305-00-164-7082	2	45
96906	MS51957-13	5305-00-054-5647	1	8

NATIONAL STOCK NUMBER AND PART NUMBER INDEX

FSCM	PART NUMBER	PART NUMBER INDEX STOCK NUMBER	FIG.	ITEM			
96906	MS51957-13	5305-00-054-5647	1	26			
			2	2			
			2	7			
			2	9			
			2	26			
			2	33			
			2	40			
			2	50			
			2	56			
			2	79			
			2	84			
			5	11			
			96906	MS51957-14	5305-00-054-5648	2	98
						5	7
96906	MS51957-16	5305-00-054-5650	2	6			
			5	3			
			5	12			
			5	16			
96906	MS51957-28	5305-00-054-6652	1	17			
			1	20			
			2	105			
			2	107			
96906	MS51957-29	5305-00-054-6653	2	16			
96906	MS51957-3	5305-00-054-5637	2	70			
			2	74			
96906	MS51957-43	5305-00-054-6668	13	3			
96906	MS51957-44	5305-00-054-6669	2	19			
96906	MS51957-5	5305-00-054-5639	1	11			
96906	MS51958-63	5305-00-059-3659	1	14			
96906	MS51960-84	5305-00-719-5093	13	1			
96906	MS51964-10	5305-00-724-5395	2	12			
96906	MS9390-170	5315-00-923-6750	2	108			
96906	MS9390-190	5315-00-928-9534	12	2			
96906	MS9390-300	5315-00-899-3103	2	82			
96906	MS9390-310	5315-00-959-6760	2	21			
81349	M24308/2-1	5935-00-490-5219	7	2			
81349	M24308/2-3	5935-00-410-9250	6	4			
81349	M24308/25-9	5935-01-179-3497	6	2			
			7	1			
			9	8			
			11	3			
			9	9			
			11	4			
			11	4			
81349	M24308/4-2	5935-00-490-3743	6	3			
81349	M24308/4-3	5935-00-489-9999	4	2			
81349	M55302/55-A10M	5935-01-136-6506	11	5			
81349	M55302/56-A10	5935-01-067-2976	3	2			
81349	M55302/56-A10F	5935-01-067-2976	4	3			
81349	M55302/64A10F	5935-01-058-9270	11	2			
81349	M83503/7-06	5935-01-128-3639	8	4			

NATIONAL STOCK NUMBER AND PART NUMBER INDEX

FSCM	PART NUMBER	PART NUMBER INDEX STOCK NUMBER	FIG.	ITEM
80205	NAS1397P2B	5340-00-985-6633	2	24
80205	NAS620C2	5310-00-043-4708	1	12
			2	71
			2	75
80205	NAS620C4L	5310-00-723-9676	2	3
			2	8
			2	46
80205	NAS620C8	5310-00-069-5291	13	4
80205	NAS662C2R5	5305-00-833-7228	2	13
72962	RMLH3858-26	5310-00-813-6950	1	13
81349	RV6NAYSB102A	5905-00-578-4131	9	3
46384	SOS-6440-16		2	110
46384	SOS-6440-8		9	5
50294	SSR-3LLRA3P25L01		2	39
			2	53
50294	SSRI-6632ZZRA3P2		2	62
50294	SSRIF-5632LLRA3P		2	47
46384	SOS-6440-4		12	6
75382	TYPE21		1	28
83553	T045-270-234L		2	42
19059	102051		12	10
19059	105705-002		9	10
19059	105707		13	5
19059	105713		1	10
19059	105745		2	1
19059	106595	7530-01-103-8267	1	3
19059	106751	5355-01-065-9289	9	2
19059	107216	6105-01-159-4968	3	3
19059	107217		2	48
19059	107222		2	80
19059	107224		2	20
19059	107225		2	76
19059	107227-1		2	61
19059	107227-2		2	32
			2	37
			2	44
			2	52
19059	107228		2	69
19059	107232		2	55
19059	107235		2	10
19059	107237-1		2	41
19059	107237-5		2	51
19059	107245-001		2	5
19059	107272		12	4
19059	107273		1	5
19059	107277		2	67
19059	107279		2	31
19059	107278		2	31
19059	107280		2	35
19059	107282-001		2	95
19059	107283-001		2	91

NATIONAL STOCK NUMBER AND PART NUMBER INDEX

FSCM	PART NUMBER INDEX PART NUMBER	STOCK NUMBER	FIG.	ITEM
19059	107286-100		2	73
19059	107293	5340-01-215-5079	2	78
19059	107298-100		2	18
19059	107305-004		2	86
19059	107306		2	60
19059	107307		2	72
19059	107322		2	63
19059	108016	5305-01-160-7322	2	57
19059	108023		2	14
19059	108036-100		2	38
19059	108060-100	5815-01-158-2966	1	4
19059	108075		2	49
19059	108622		5	6
19059	108623-100		5	1
19059	108624-100		1	30
19059	108625-100	5815-01-158-2965	1	25
19059	108628		2	100
19059	108629-100		1	19
19059	108632		2	11
19059	109814-100	6130-01-156-0435	1	23
19059	109861-100	5815-01-156-0410	5	2
19059	109869-100	5915-01-170-5086	5	10
19059	109870-100	5995-01-158-2992	5	15
19059	109876-100	5815-01-190-7492	1	32
19059	109877-100	5815-01-188-0356	2	15
19059	109881-100	5815-01-158-3003	1	31
19059	109883-100	5995-01-158-2995	1	29
19059	109884		2	4
19059	109885-100		1	24
19059	109894-001		2	106
19059	109895-001		2	104
19059	109896-001		1	33
19059	109897-001		1	16
			2	99
19059	109898-100	5995-01-156-0433	2	25
19059	109899-001		2	103
19059	109899-002		2	102
19059	109900-100		2	87
19059	109906		1	1
19059	109909		2	83
13499	310-0740-560	5310-00-989-0640	1	15
75037	3435-0000	5999-01-054-8002	8	3
28218	3490-2		8	2
81860	43-9507-01-901	5340-00-917-4549	13	2
86928	5602-63-32	5310-01-160-1814	1	22
03640	6079033	5305-00-814-1707	2	64
			2	66
			2	68
			2	77
19059	700015-162		2	81
19059	700018-002		2	54

NATIONAL STOCK NUMBER AND PART NUMBER INDEX

FSCM	PART NUMBER INDEX PART NUMBER	STOCK NUMBER	FIG.	ITEM
19059	700022-0003		2	89
19059	700022-0015		2	29
19059	700022-0018		2	28
19059	700022-0021		2	34
19059	700022-0022		2	36
19059	700042-0011	5310-01-160-7321	2	27
19059	700043-0002		2	43
19059	700044-001		2	17
19059	700045-001	5815-01-198-6804	2	58
19059	700211-0002	5925-01-173-9924	9	5A
19059	905094-001		7	3
88769	91921002	5310-00-057-0573	1	9
			1	27

LATEST PART NUMBER ASSIGNMENTS

81349	M24308/2-1		8	6
-------	------------	--	---	---

RECOMMENDED CHANGES TO EQUIPMENT TECHNICAL PUBLICATIONS



THEN... JOT DOWN THE DOPE ABOUT IT ON THIS FORM. CAREFULLY TEAR IT OUT. FOLD IT AND DROP IT IN THE MAIL!

SOMETHING WRONG WITH THIS PUBLICATION?

FROM: (PRINT YOUR UNIT'S COMPLETE ADDRESS)
 Commander
 Stateside Army Depot
 ATTN: AMSTA-US
 Stateside, N.J. 07703-5007

DATE SENT
 10 July 1975

PUBLICATION NUMBER
 TM 11-5840-340-20P

PUBLICATION DATE
 23 Jan 78

PUBLICATION TITLE
 Radar Set AN/PRC-76

BE EXACT... PIN-POINT WHERE IT IS

PAGE NO	PARA-GRAPH	FIGURE NO	TABLE NO
33			
44		19	
45			

IN THIS SPACE TELL WHAT IS WRONG AND WHAT SHOULD BE DONE ABOUT IT:

For item 2, change the NSN to read: 5835-00-134-9186.
Reason: Accuracy.

Identify the cover on the junction box (item no. 5).
Reason: It is a separate item and is not called out on figure 19.

Add the cover of the junction box as an item in the listing for figure 19.
Reason: Same as above

S A M P L E

PRINTED NAME, GRADE OR TITLE, AND TELEPHONE NUMBER
 SSG I. M. DeSpirito of 999-1776

SIGN HERE

TEAR ALONG PERFORATED LINE

FILL IN YOUR
UNIT'S ADDRESS

FOLD BACK

DEPARTMENT OF THE ARMY

POSTAGE AND FEES PAID
DEPARTMENT OF THE ARMY
DOD 314



OFFICIAL BUSINESS
PENALTY FOR PRIVATE USE \$300

SAMPLE

Commander
US. Army Communications-Electronics Command
and Fort Monmouth
ATTN: AMSEL-ME-MP
Fort Monmouth, New Jersey 07703-5007

TEAR ALONG PERFORATED LINE

RECOMMENDED CHANGES TO EQUIPMENT TECHNICAL PUBLICATIONS



THEN...JOT DOWN THE DOPE ABOUT IT ON THIS FORM. CAREFULLY TEAR IT OUT, FOLD IT AND DROP IT IN THE MAIL.

SOMETHING WRONG WITH THIS PUBLICATION?

FROM: (PRINT YOUR UNIT'S COMPLETE ADDRESS)

DATE SENT

PUBLICATION NUMBER

TM 11-7025-217-30P

PUBLICATION DATE

15 May 1987

PUBLICATION TITLE Teleprinter

Electrographic TT-772(P)/G

BE EXACT PIN-POINT WHERE IT IS

PAGE NO.	PARA-GRAPH	FIGURE NO.	TABLE NO.

IN THIS SPACE TELL WHAT IS WRONG AND WHAT SHOULD BE DONE ABOUT IT:

TEAR ALONG PERFORATED LINE

PRINTED NAME GRADE OR TITLE AND TELEPHONE NUMBER

SIGN HERE

FILL IN YOUR
UNIT'S ADDRESS

FOLD BACK

DEPARTMENT OF THE ARMY

OFFICIAL BUSINESS
PENALTY FOR PRIVATE USE \$300

POSTAGE AND FEES PAID
DEPARTMENT OF THE ARMY
DOD 314



TEAR ALONG PERFORATED LINE

Commander
US Army Communications-Electronics Command
and Fort Monmouth
ATTN: AMSEL-ME-MP
Fort Monmouth, New Jersey 07703-5007

RECOMMENDED CHANGES TO EQUIPMENT TECHNICAL PUBLICATIONS



SOMETHING WRONG WITH THIS PUBLICATION?

THEN...JOT DOWN THE DOPE ABOUT IT ON THIS FORM. CAREFULLY TEAR IT OUT, FOLD IT AND DROP IT IN THE MAIL.

FROM: (PRINT YOUR UNIT'S COMPLETE ADDRESS)

DATE SENT

PUBLICATION NUMBER

TM 11-7025-217-30P

PUBLICATION DATE

15 May 1987

PUBLICATION TITLE Teleprinter

Electrographic TT-772(P)/G

BE EXACT PIN-POINT WHERE IT IS

PAGE NO.	PARA-GRAPH	FIGURE NO.	TABLE NO.
----------	------------	------------	-----------

IN THIS SPACE TELL WHAT IS WRONG AND WHAT SHOULD BE DONE ABOUT IT:

IT IS LONG PERFORATED LINE

PRINTED NAME GRADE OR TITLE AND TELEPHONE NUMBER

SIGN HERE

FILL IN YOUR
UNIT'S ADDRESS

FOLD BACK

DEPARTMENT OF THE ARMY

OFFICIAL BUSINESS
PENALTY FOR PRIVATE USE \$300

POSTAGE AND FEES PAID
DEPARTMENT OF THE ARMY
DOD 314



TEAR ALONG PERFORATED LINE

Commander
US Army Communications-Electronics Command
and Fort Monmouth
ATTN: AMSEL-ME-MP
Fort Monmouth, New Jersey 07703-5007

RECOMMENDED CHANGES TO EQUIPMENT TECHNICAL PUBLICATIONS



THEN...JOT DOWN THE DOPE ABOUT IT ON THIS FORM. CAREFULLY TEAR IT OUT, FOLD IT AND DROP IT IN THE MAIL.

SOMETHING WRONG WITH THIS PUBLICATION?

FROM: (PRINT YOUR UNIT'S COMPLETE ADDRESS)

DATE SENT

PUBLICATION NUMBER
TM 11-7025-217-30P

PUBLICATION DATE
15 May 1987

PUBLICATION TITLE Teleprinter
Electrographic TT-772(P)/G

BE EXACT PIN-POINT WHERE IT IS

PAGE NO.	PARA-GRAPH	FIGURE NO.	TABLE NO.

IN THIS SPACE TELL WHAT IS WRONG AND WHAT SHOULD BE DONE ABOUT IT:

TEAR ALONG PERFORATED LINE

PRINTED NAME GRADE OR TITLE AND TELEPHONE NUMBER

SIGN HERE

FILL IN YOUR
UNIT'S ADDRESS

FOLD BACK

DEPARTMENT OF THE ARMY

OFFICIAL BUSINESS
PENALTY FOR PRIVATE USE \$300

POSTAGE AND FEES PAID
DEPARTMENT OF THE ARMY
DOD 314



TEAR ALONG PERFORATED LINE

Commander
US Army Communications-Electronics Command
and Fort Monmouth
ATTN: AMSEL-ME-MP
Fort Monmouth, New Jersey 07703-5007

By Order of the Secretary of the Army:

Official:

JOHN A. WICKHAM, JR.
General, *United States Army*
Chief of Staff

R. L. DILWORTH
Brigadier General, United States Army
The Adjutant General

DISTRIBUTION :

To be distributed in accordance with DA Form 12-51 literature requirements for TT-772/G